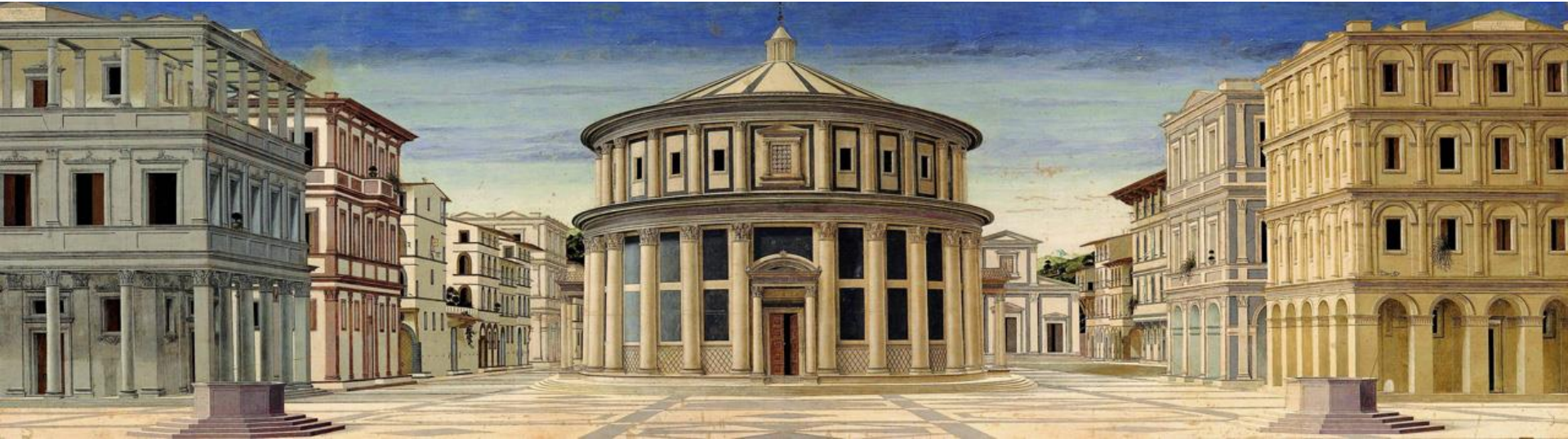


**Πως δημιουργούμε μία εικόνα
(How do we create an image)**

Piero della Francesca, Ideal City

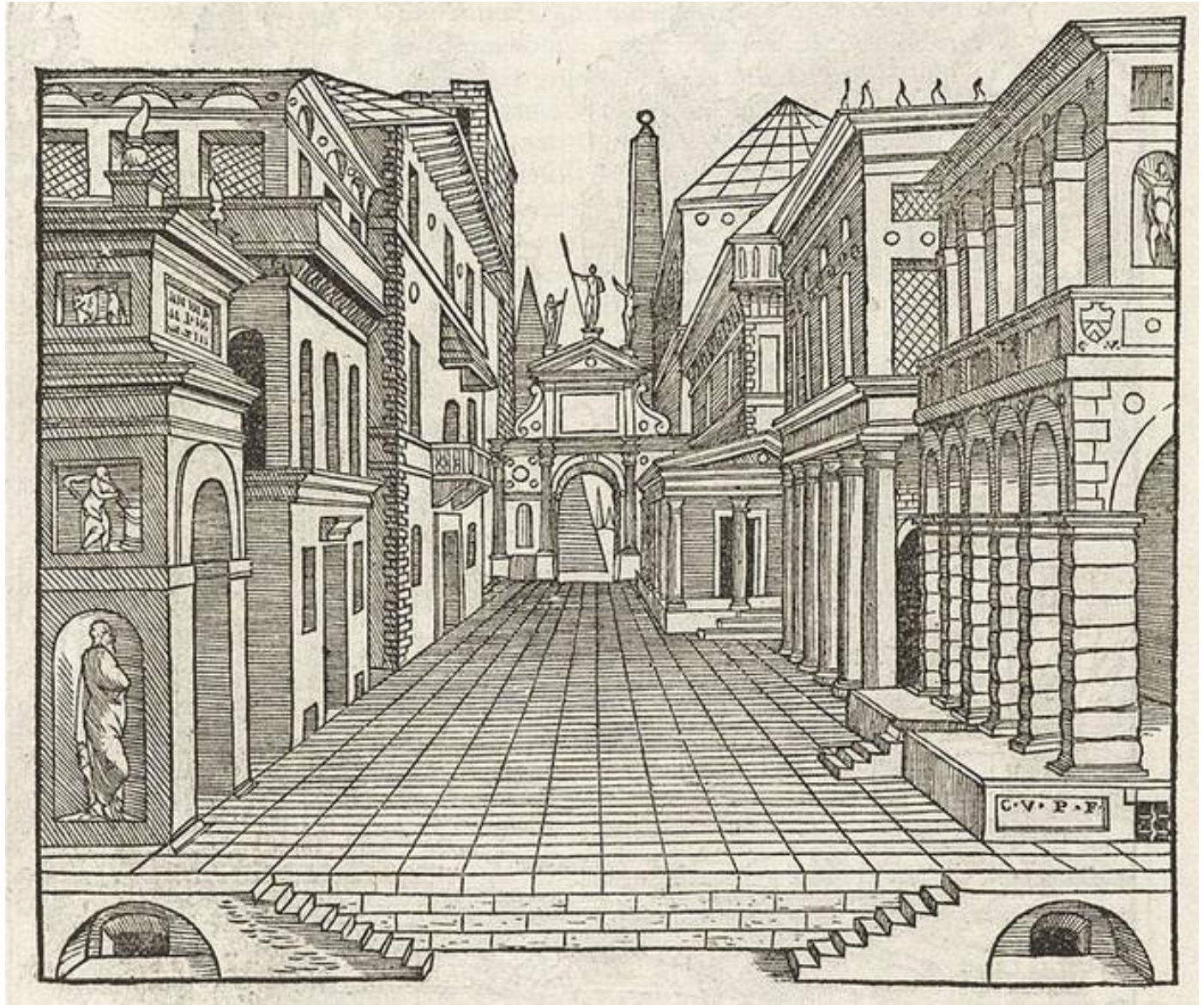
Masolino, St. Peter Healing a Cripple and the Raising of Tabitha (1425)



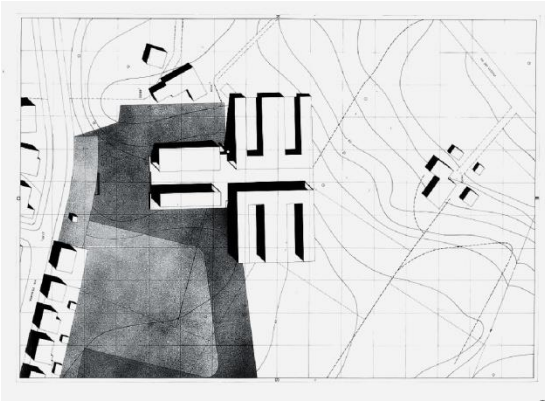
Central Perspective

It has one principal point where all the guiding lines end. All the other lines are orthogonal. This representation allows the front elevation to directly face the viewer. It was commonly used during Renaissance.

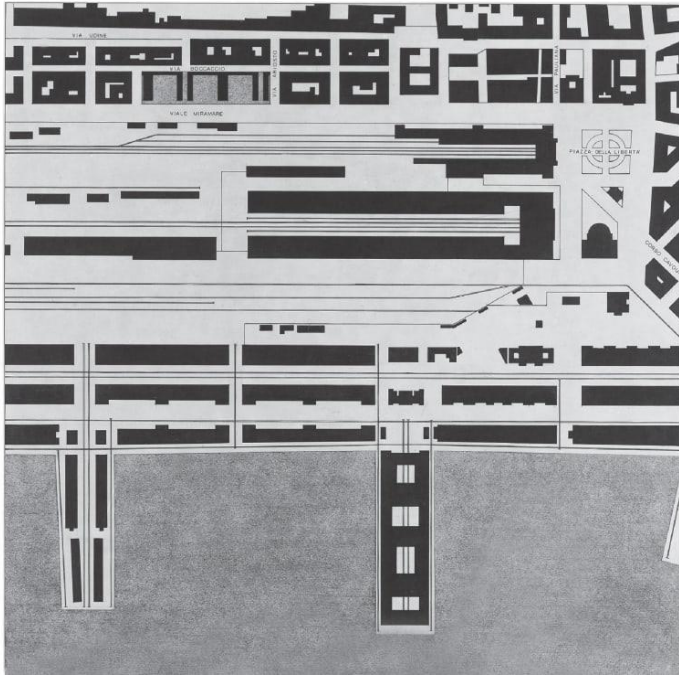




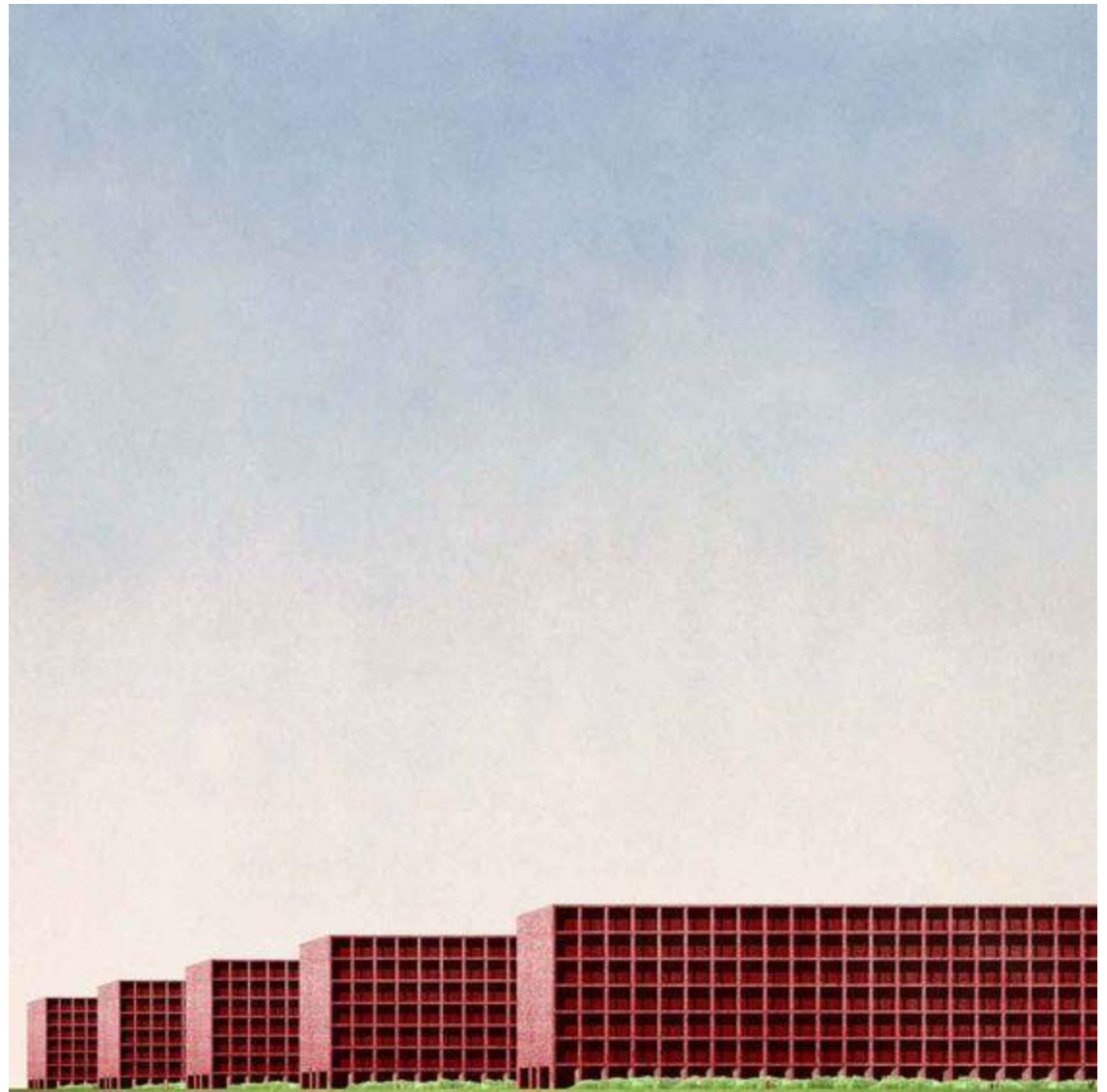
Giorgio Grassi, Casa dello Studente



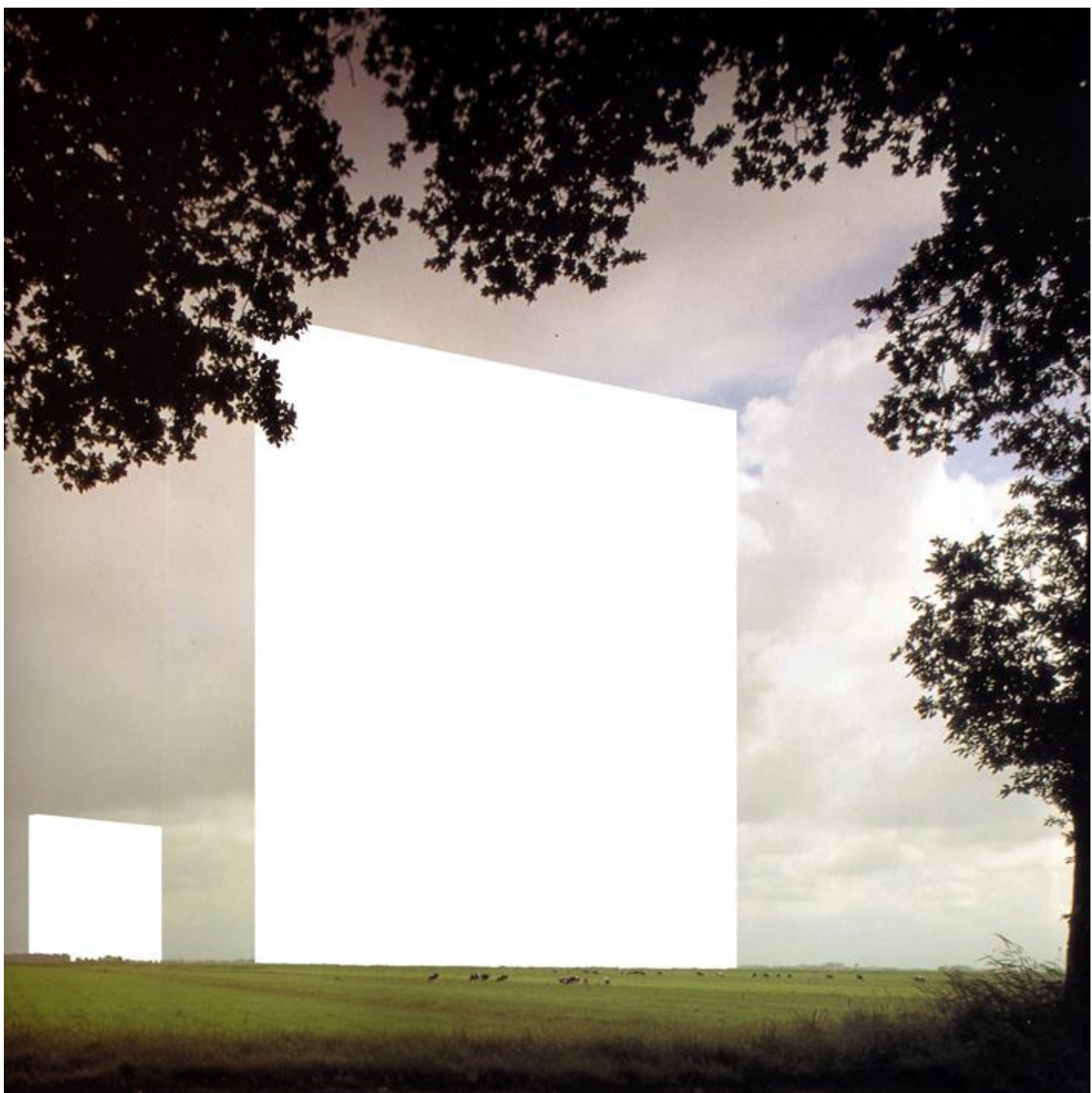
Giorgio Grassi, Office Blocks in Trieste



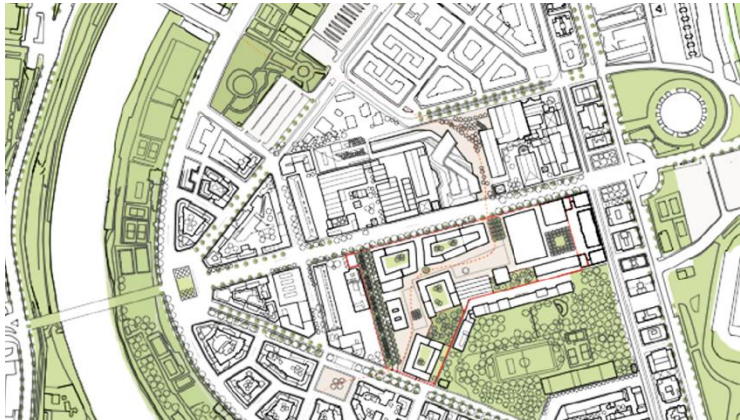
Dogma, Proposal for 1500 residential units at Vernets, Geneve





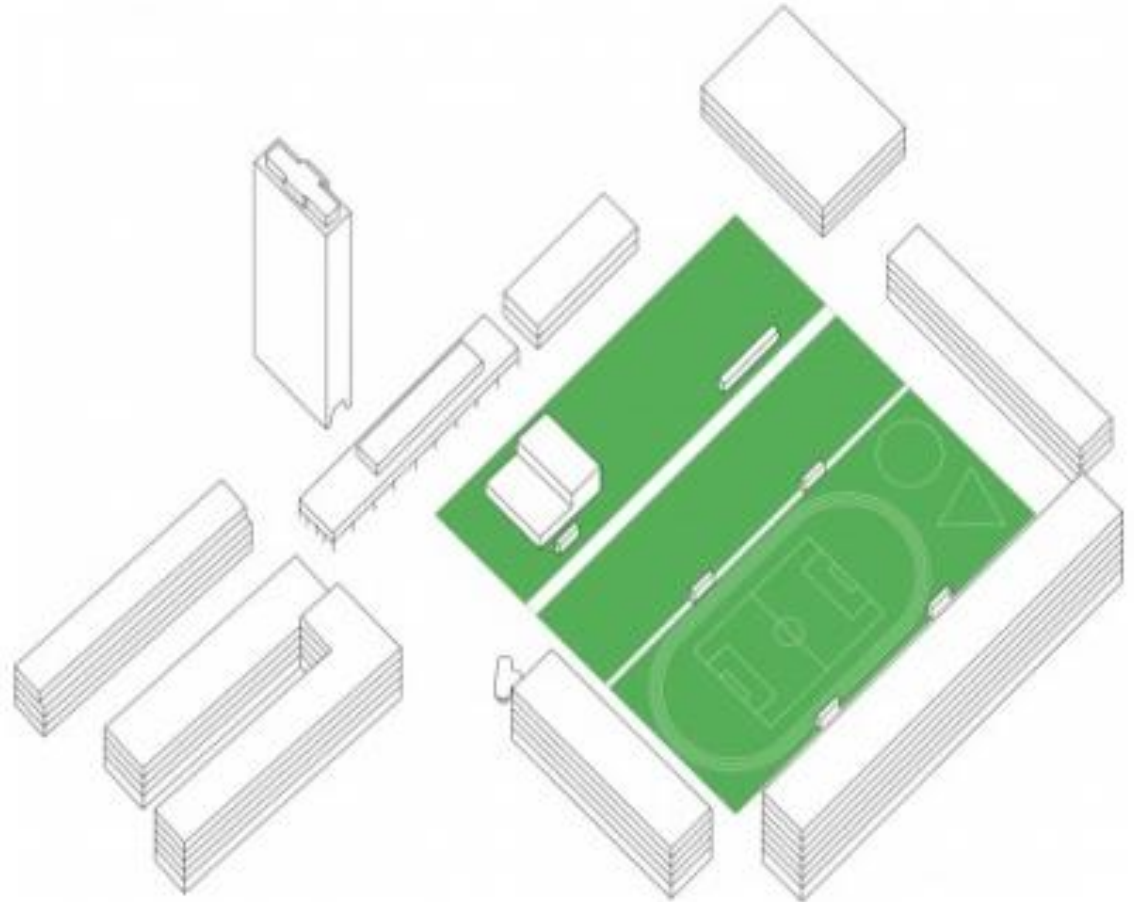
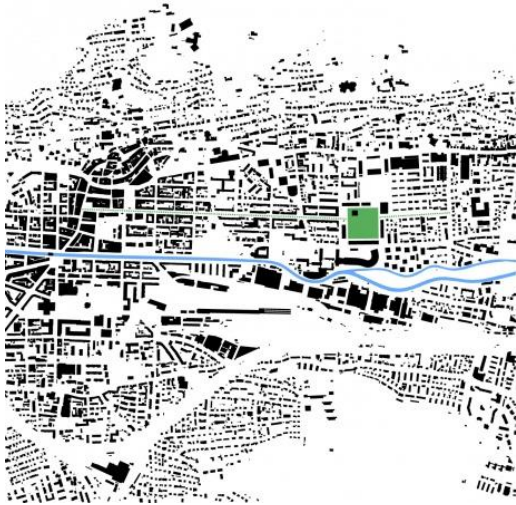


Caruso St John Architects, Progetto Flaminio, Rome (2015)





Raumbureau, Gurzelen Biel (2014)



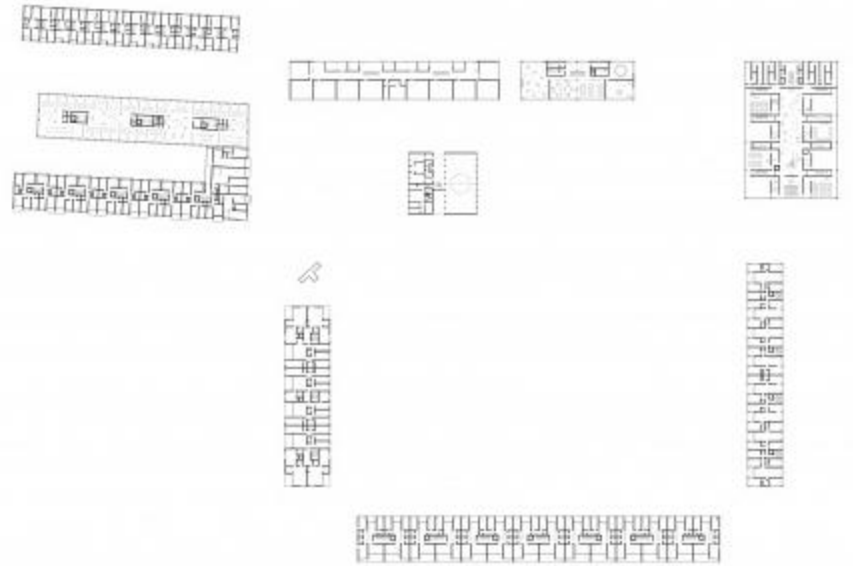
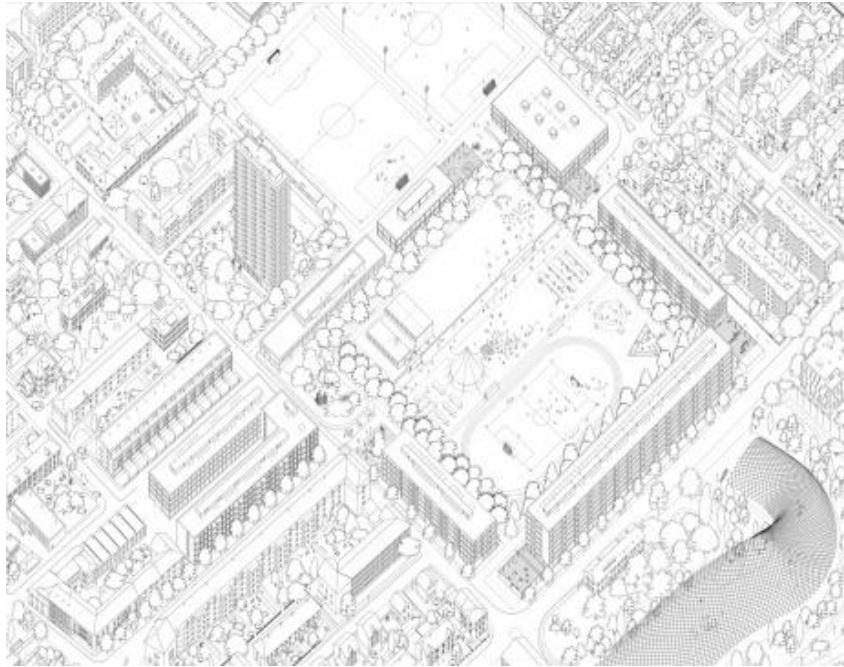




Raumbureau, Kleinbruggen, Chur, 2010

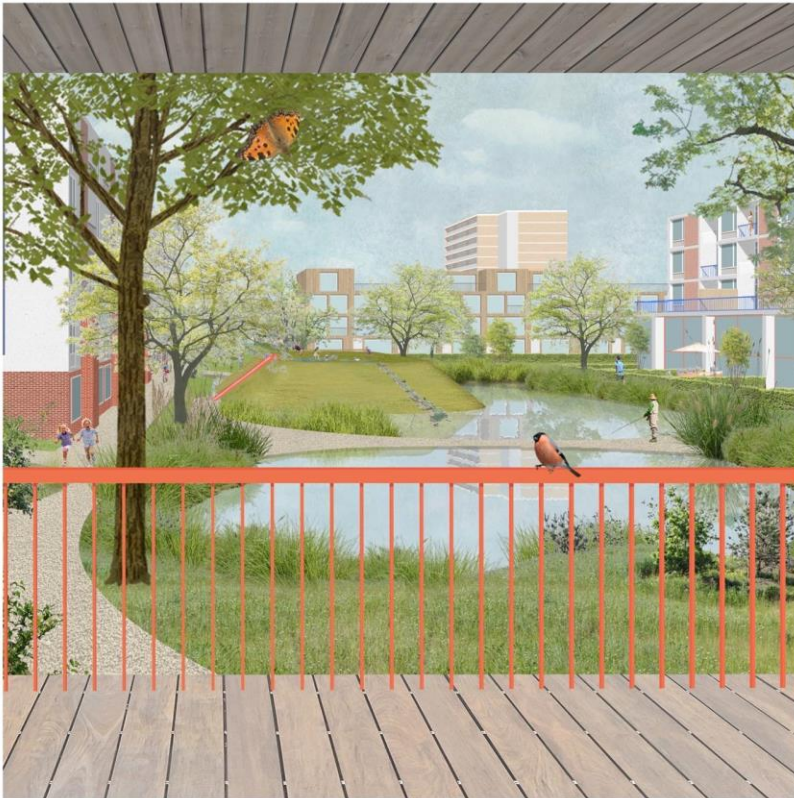




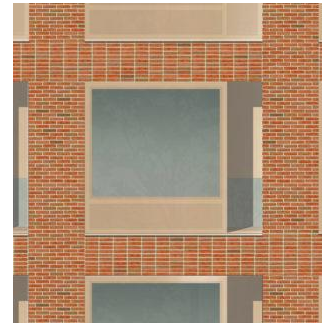
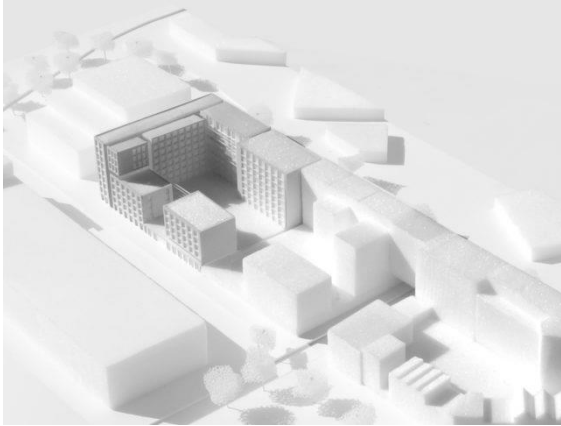


Shift Architect and Urbanism, Westwijk Rooted (2020)

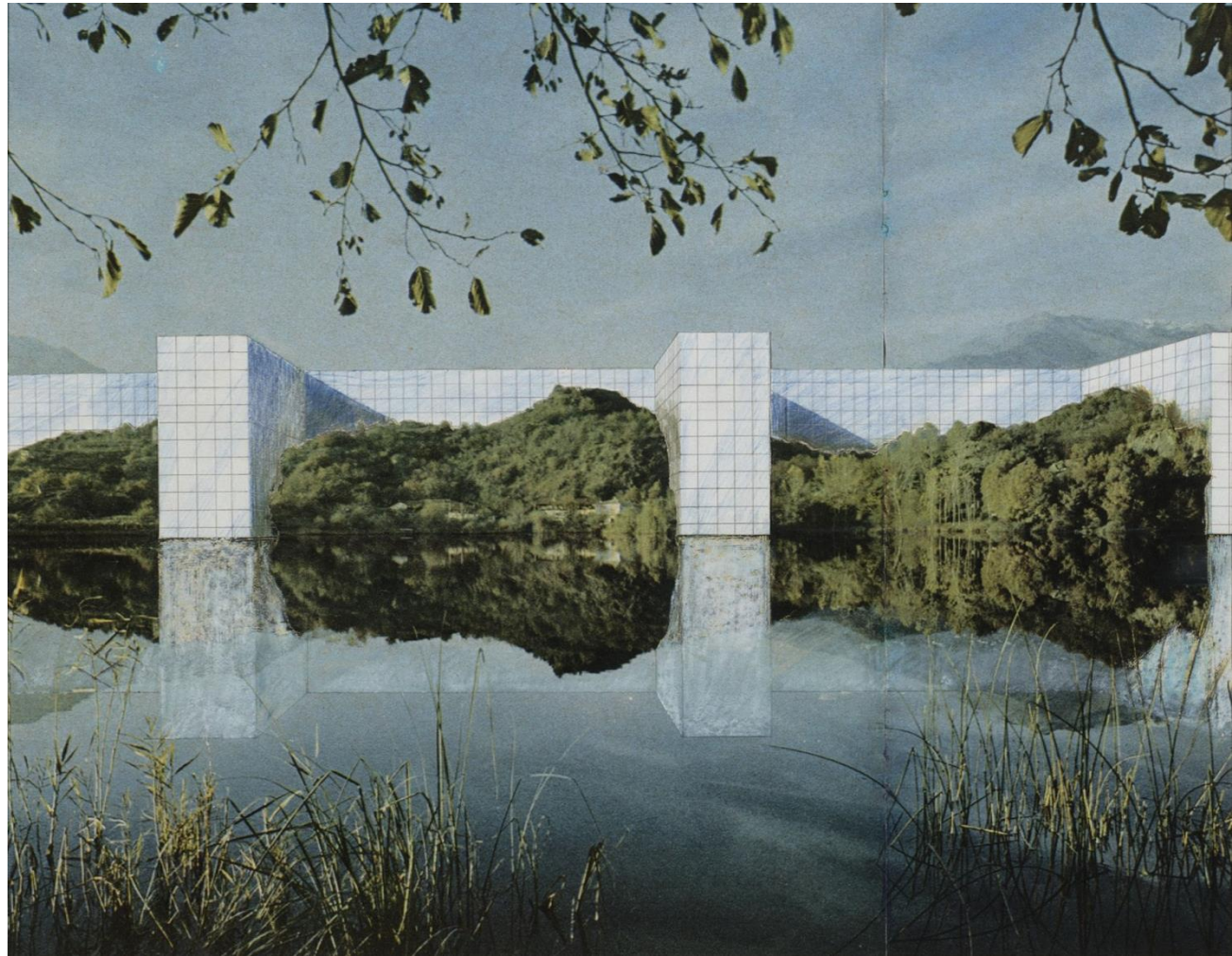
Building on Van Tijen's modernistic open urban structure and at the same time redefining the ground level to be water-resilient, biodiverse and attractive for new living environments



Shift Architect and Urbanism, **Domūs Houthaven**, Amsterdam (2020)



The Continuous Monument: On the River, project (Perspective)1969



Landscape

Every building is plugged into a landscape. Using collage allows to introduce trees, waters, skies, into our project to characterize the surround environment.

OFFICE Kgdvs, château d'eau, concours Belgique, 2007



OFFICE Kgdvs, château d'eau, Belgique, 2007

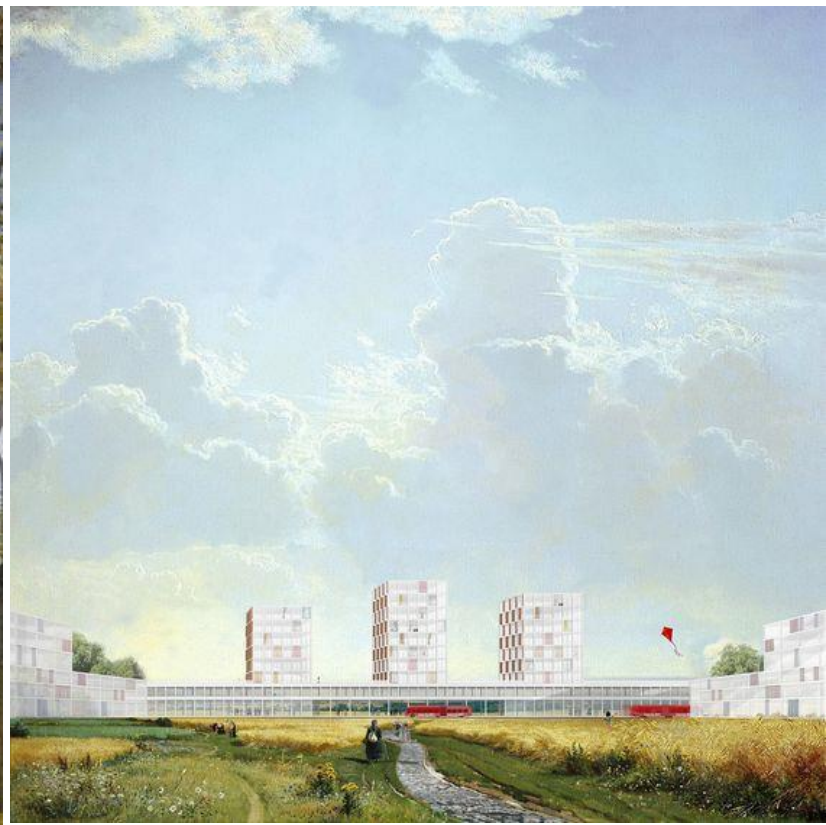


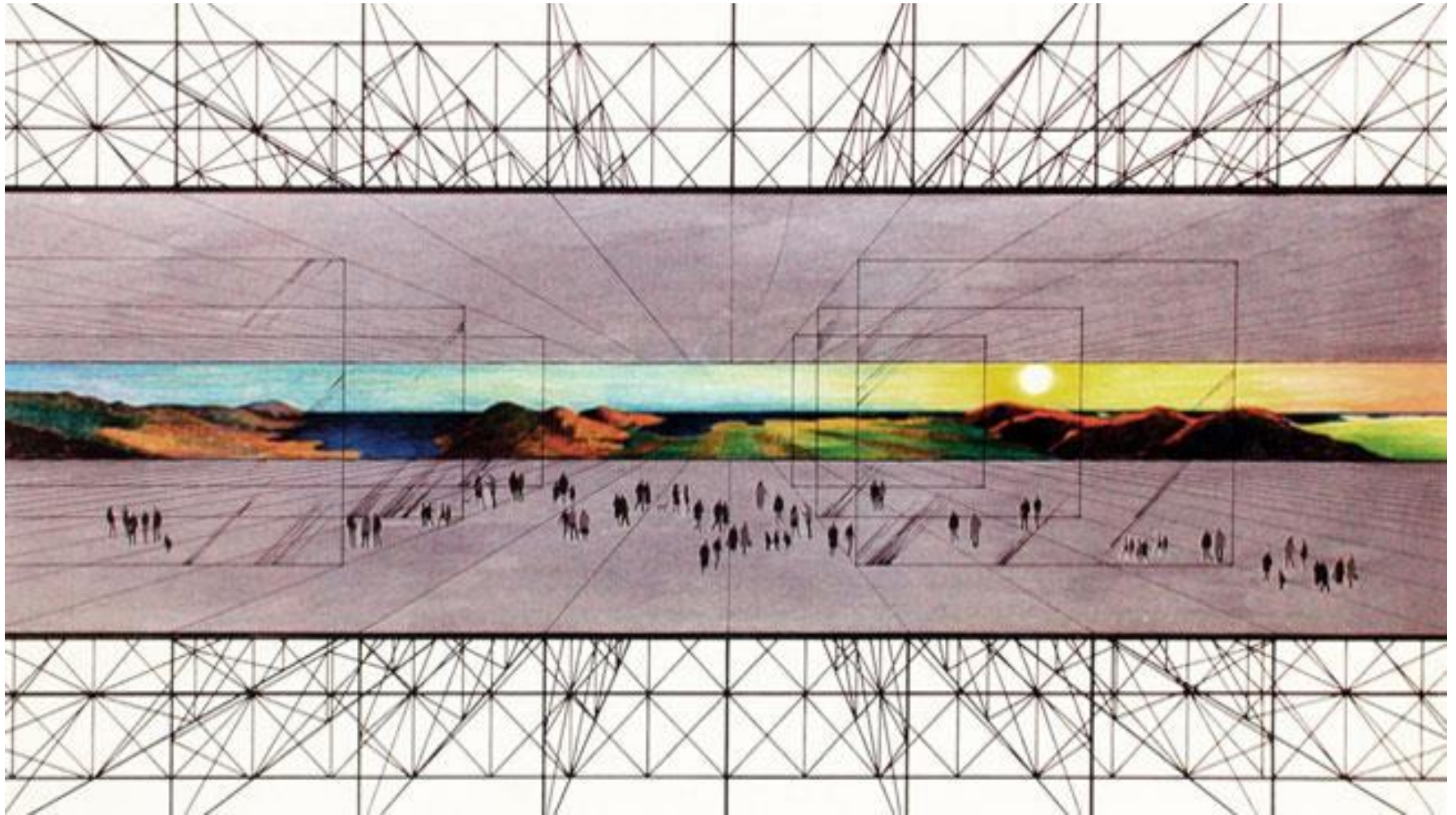
OFFICE Kgdvs + KCAP, nouveau siège de la radio et télévision



Caruso St John, Letzibach housing block, Zurich



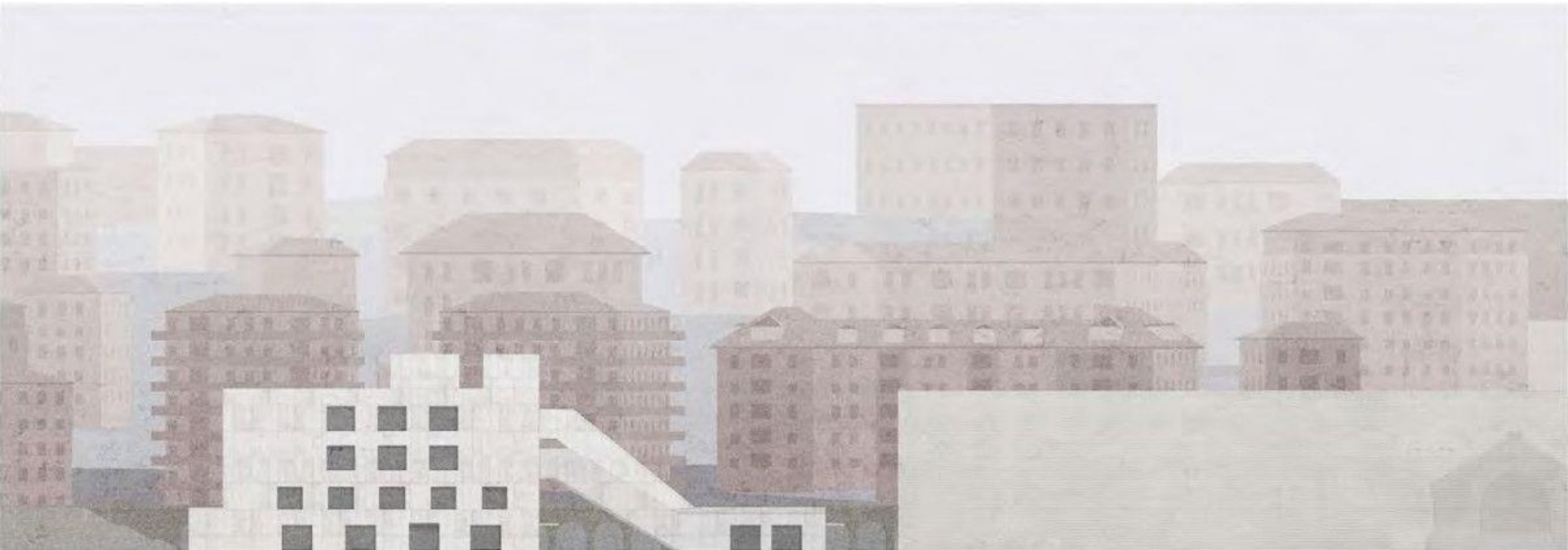




Background

Choose a background for your images. It can be a landscape (mountains or trees at the back), urban (buildings) or an abstract background (like a graphic color). The background should play an important role in combination with your project.

Caruso St. John, Elysée-Mudac Museum, Lausanne





Dogma, Brussels a manifesto towards the capital of Europe

