

2023.11.29. Γύρω από το κενό στο έργο του γλύπτη Jorge Oteiza

Oteiza. Πειραματικό Εργαστηρι

Experimental Laboratory
Laboratorio experimental
Laborategi esperimentalala



Η χώρα των βάσκων

<https://www.museooteiza.org/en/>

Κενό (Ελ)
Vacio (ΕS)
Husta (Βάσκινα)

Husta = Τίποτα

DE MI DESOCUPACIÓN DEL ESPACIO ΓΙΑ ΤΗΝ ΑΠΟ-ΚΑΤΑΛΗΨΗ ΤΟΥ ΧΩΡΟΥ

of my non-occupation of space

creación de huecos de espacios vacíos
en escultura como objeto experimental
desocupación espacial del cubo
de la esfera
y el cilindro
con un abrazo a Cézanne
desocupación del poliedro
desocupación de la ciudad
en arquitectura en urbanismo vaciar la ciudad
para ver el cielo
en el cine concavidad agujeros
en el deporte sitios fuera del mundo
en el fútbol
descolocar defensas
abrir huecos
para escapar.

*δημιουργία οπών κενών χωρων
η γλυπτική ως πειραματικό αντικείμενο
από-κατάληψη (des-occupation) του χώρου του κύβου
της σφαίρας
και του κυλίνδρου
με το ένα χέρι στον Σεζάν
από-κατάληψη του πολυέδρου
από-κατάληψη της πόλης
στην αρχιτεκτονική στην πολεοδομία αδειάζοντας την
πόλη για να δω τον ουρανό
στο σινεμά κοιλότητες οπών
στα αθλήματα τόπους εκτός του κόσμου
στο ποδόσφαιρο
εκτοπίζοντας άμυνες
ανοίγω κενά
για να ξεφύγω.*

Jorge Oteiza



Pets... photography



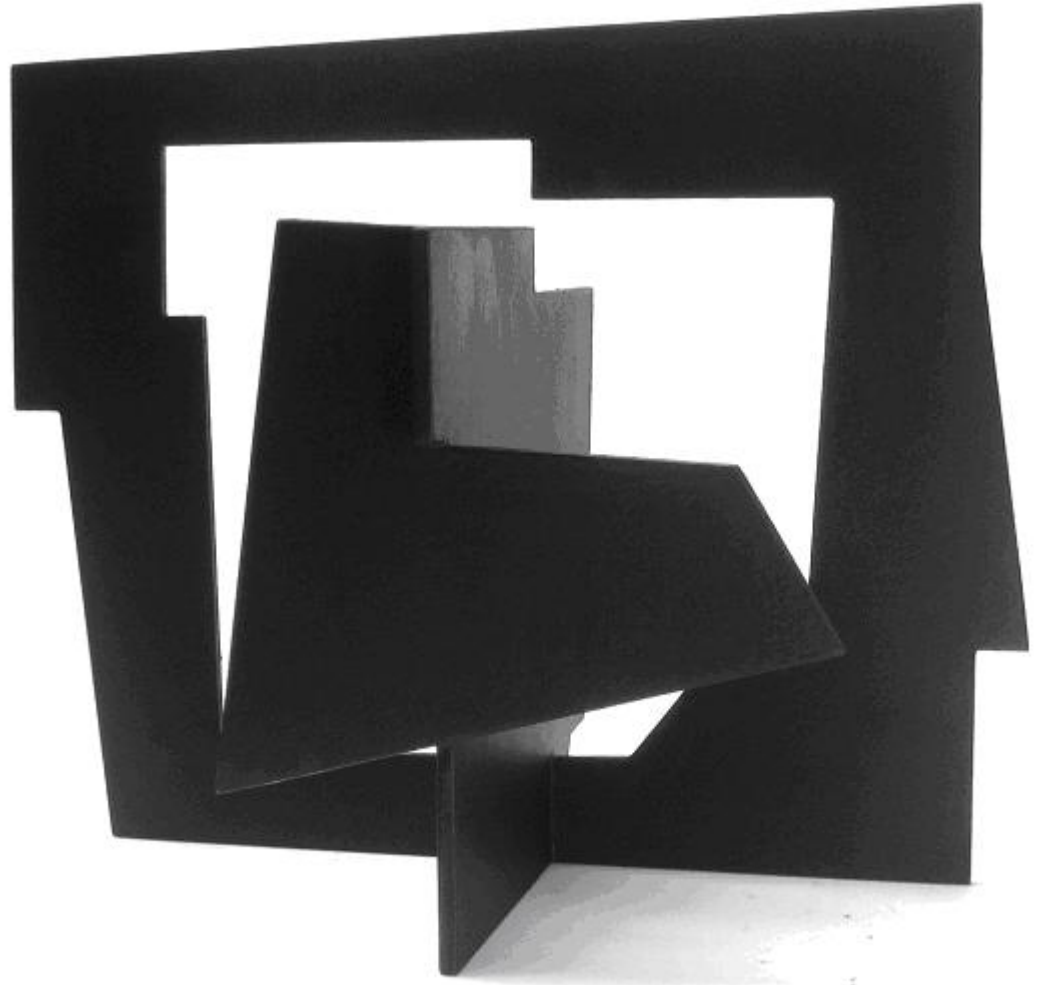




Τα μεταφυσικά κουτιά





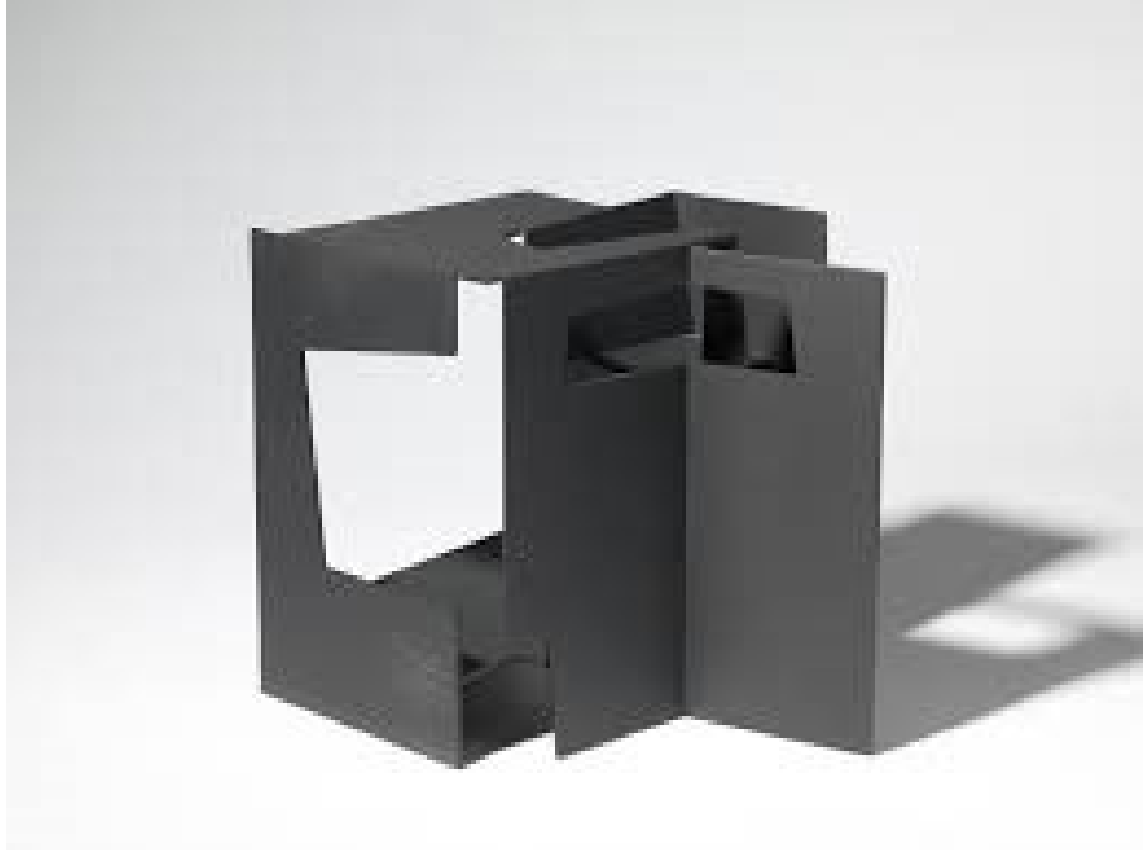








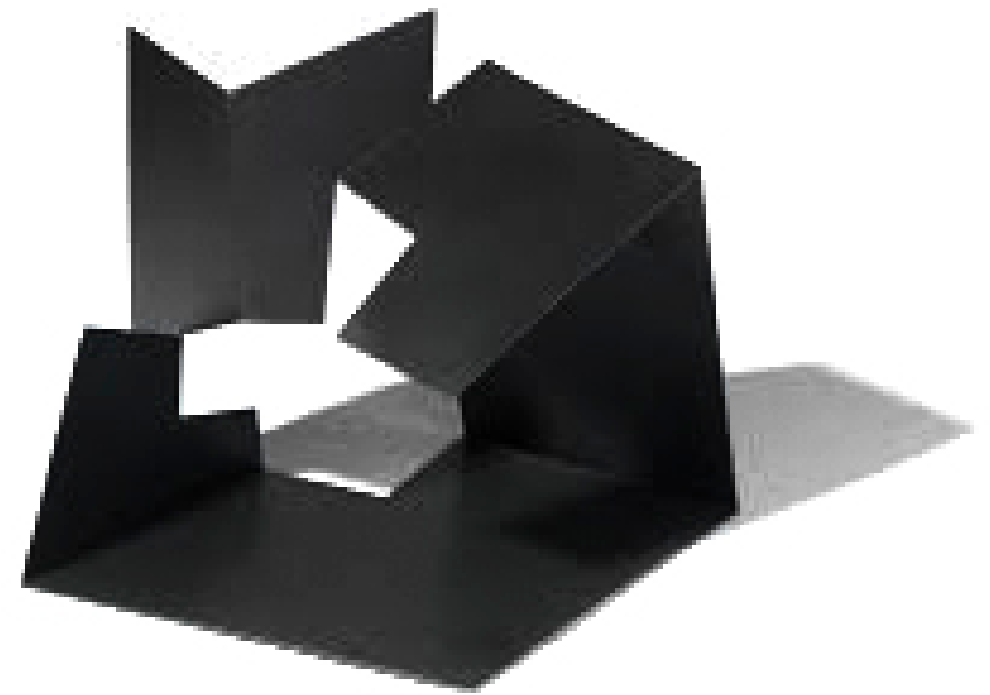














Jorge Oteiza Enbil (1908 - 2003)

Το πειραματικό εργαστήρι





Το Ίδρυμα Jorge Oteiza διατηρεί τα κομμάτια του εργαστηρίου όπως ήταν στα ράφια του εργαστηρίου του. Το σύνολο, που σχηματίζεται από 2.400 τεμάχια, φαίνεται να είναι ένα χάος. Ωστόσο μετά από ένα σύντομο χρονικό διάστημα παρατήρησης, αυτό το χάος γίνεται η ζωντανή έκφραση, αυτό που φαντάστηκε, η περιπέτεια του πειραματικού σκοπού του γλύπτη.





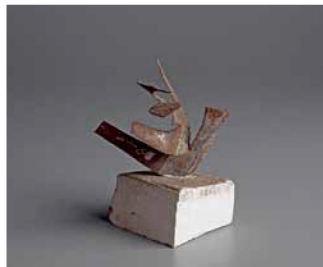


1956-1958. ESFERAREN DESOKUPAZIORAKO

Zilindro-sekzioen bidezko eraikuntzak

Tortsio linealak

Elementu kurbo arinen bidezko eraikuntzak



1956-1958. Esferaren desokupaziorako

ERAIKUNTZAK
BARNERA KURBATUAK











Taller en Nuevos Ministerios (Madrid), 1956-1957
Tallera Nuevos Ministerios-en (Madrid)



1956-1958. Esferaren desokupaziorako

Eraikuntzak

UNITATE KURBOEZ









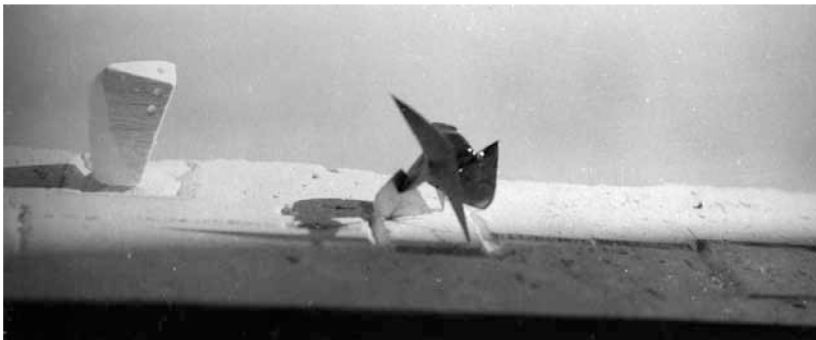
1956-1958. Esferaren desokupaziorako

Eraikuntzak

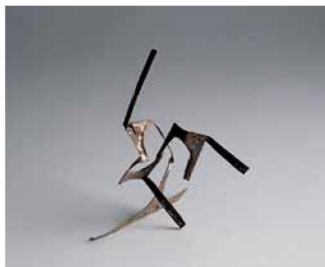
IREKIDURA KURBOKO UNITATE LAUEZ

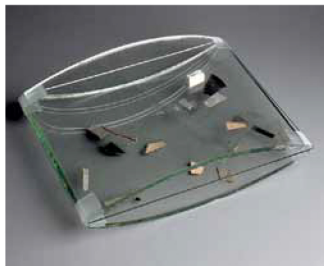
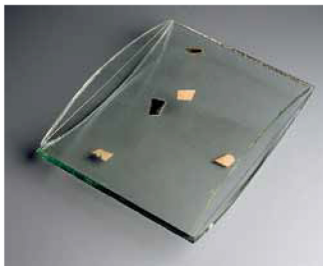


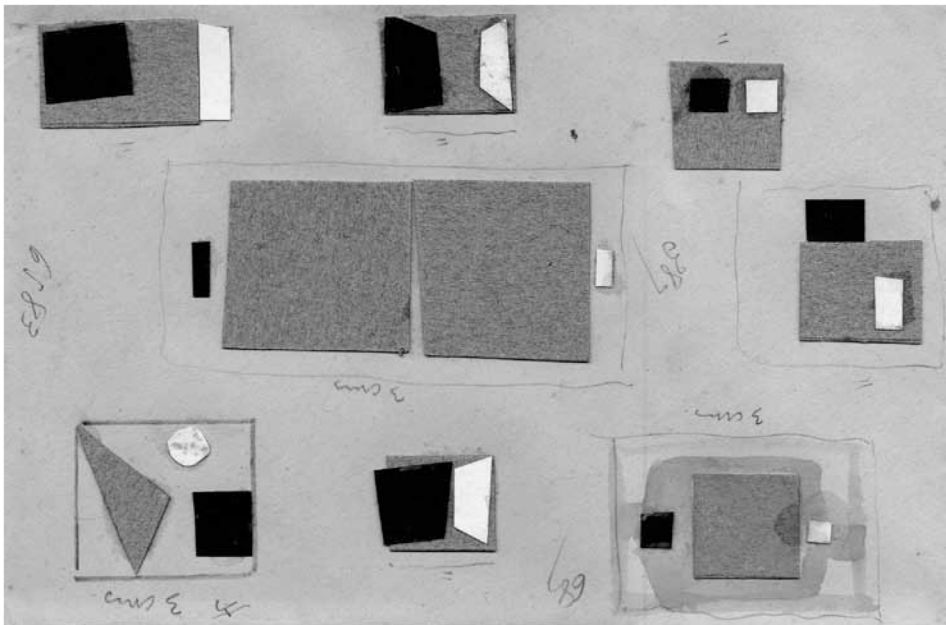




Taller en Nuevos Ministerios (Madrid). 1956-1957
Tailerra Nuevos Ministerios-en (Madril)







Sin título, 1956-1957
Izenik gabe



1957-1959. Eraikuntza hutsak eta konklusio obrak

POSITIBO-NEGATIBO ERAIKUNTZAK MALEVITX UNITATEEZ







Construcción vacía, 1958
Erazim huta



Convergencia para un vacío, 1958
Huts baterako konbergentzia





1957-1959. Eraikuntza hutsak eta konklusio obrak

ERAIKUNTZA HUTSAK



Agrupación espacial con Unidades Malevich, 1957
Bilketa espaziala Malevich unitateekin











1957-1959. Eraikuntza hutsak eta konklusio obrak

KUTXA HUTSAK







1957-1959. Eraikuntza hutsak eta konklusio obrak

ERAIKUNTZA MINIMOAK

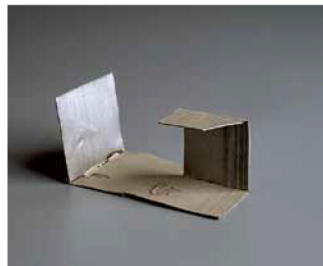






Homenaje a Velázquez, 1958
Velázquezi omenaldia





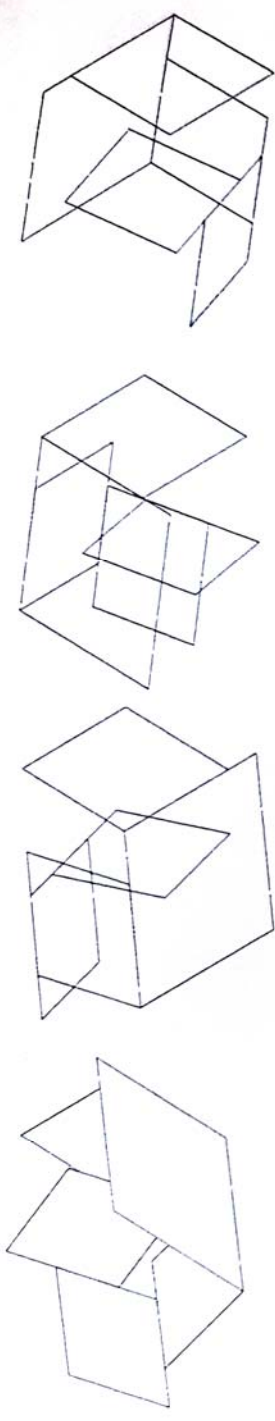
1957-1959. Eraikuntza hutsak eta konklusio obrak

UNITATE MINIMOAK

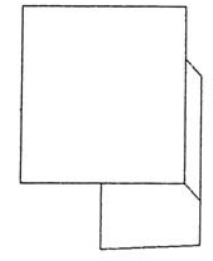
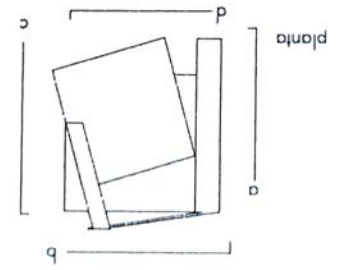
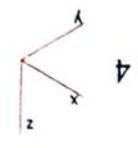
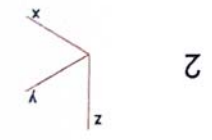
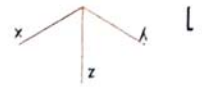


Αναπτύγματα γλυπτών από την Licia de Angelis

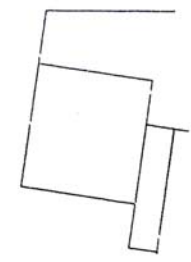
ευγενική παραχώρηση του Pedro Burgaleta έτος 2008



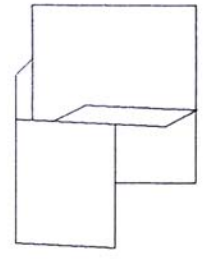
vistas axonométricas



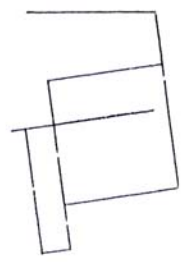
alzado a



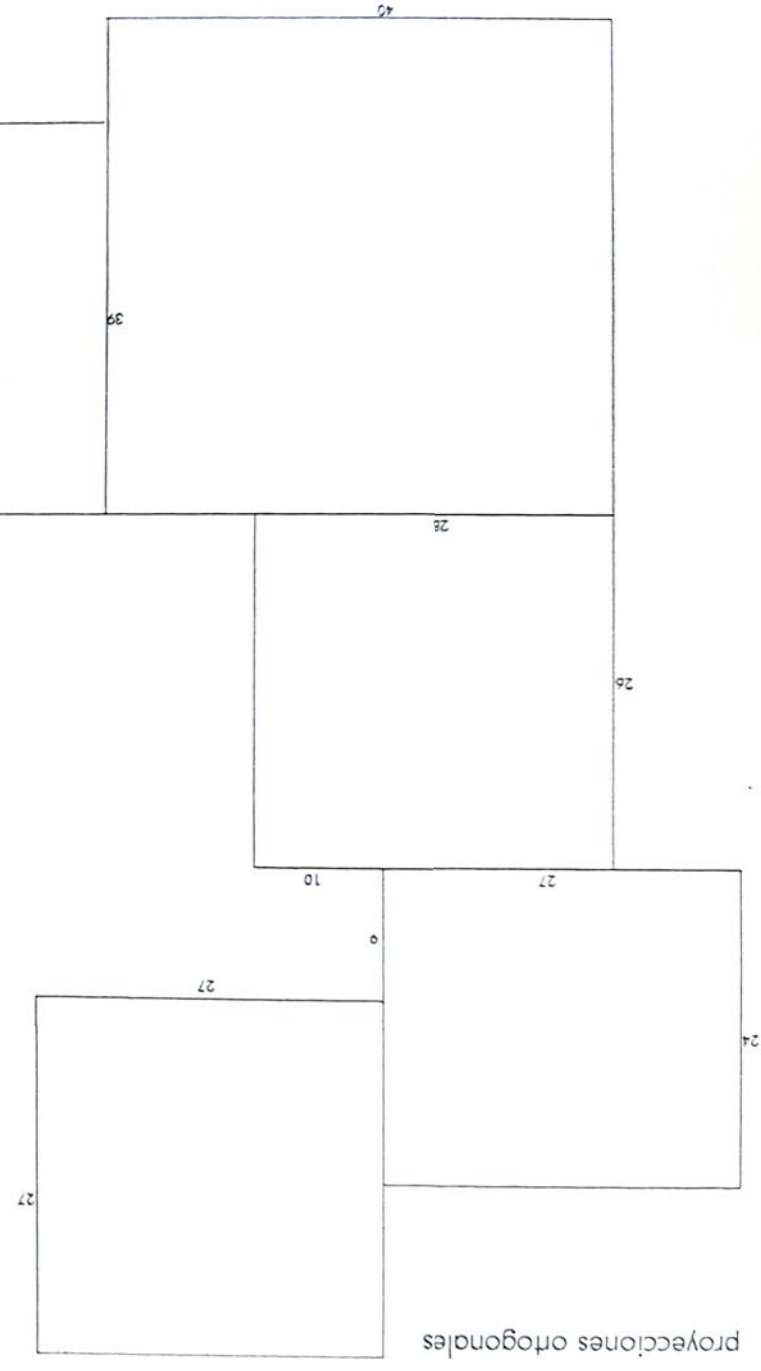
alzado b



alzado c

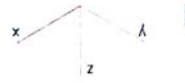
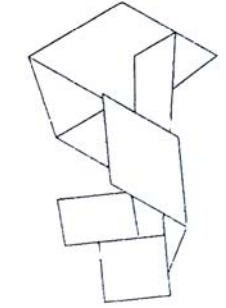
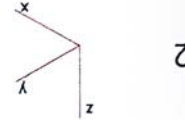
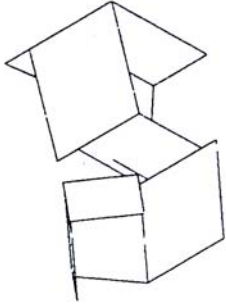
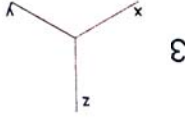
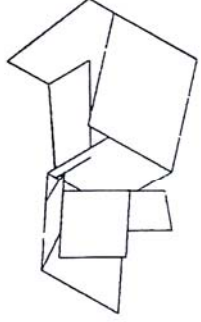
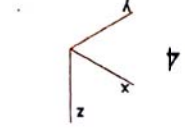
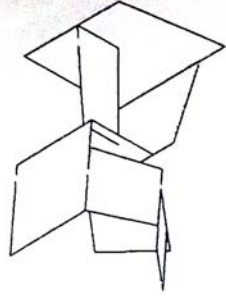


alzado d

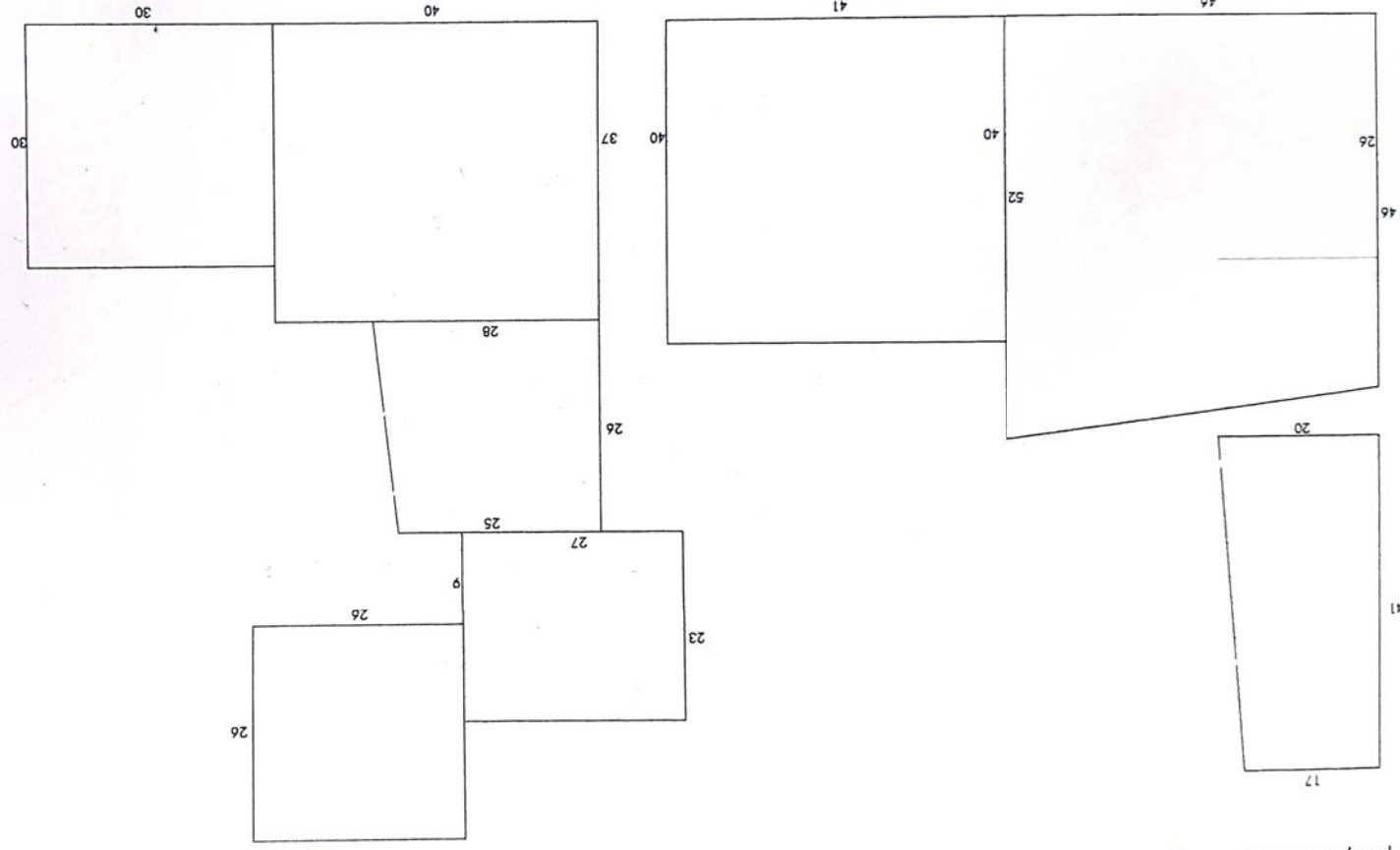


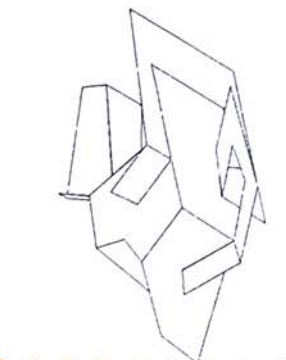
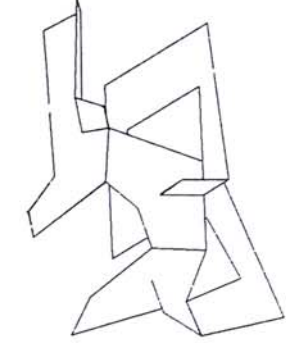
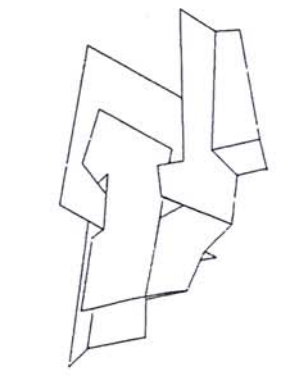
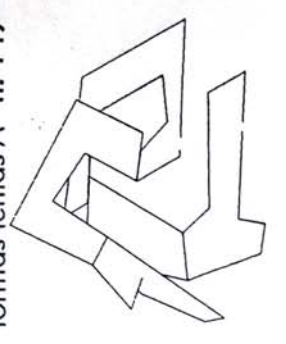
proyecciones ortogonales

despliegue de las piezas b

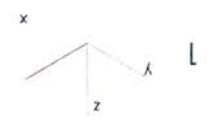


vistas axonométricas

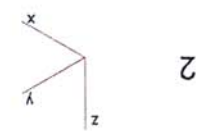




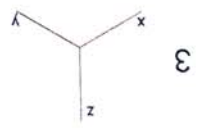
vistas axonométricas



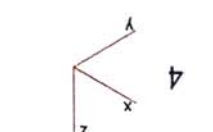
1



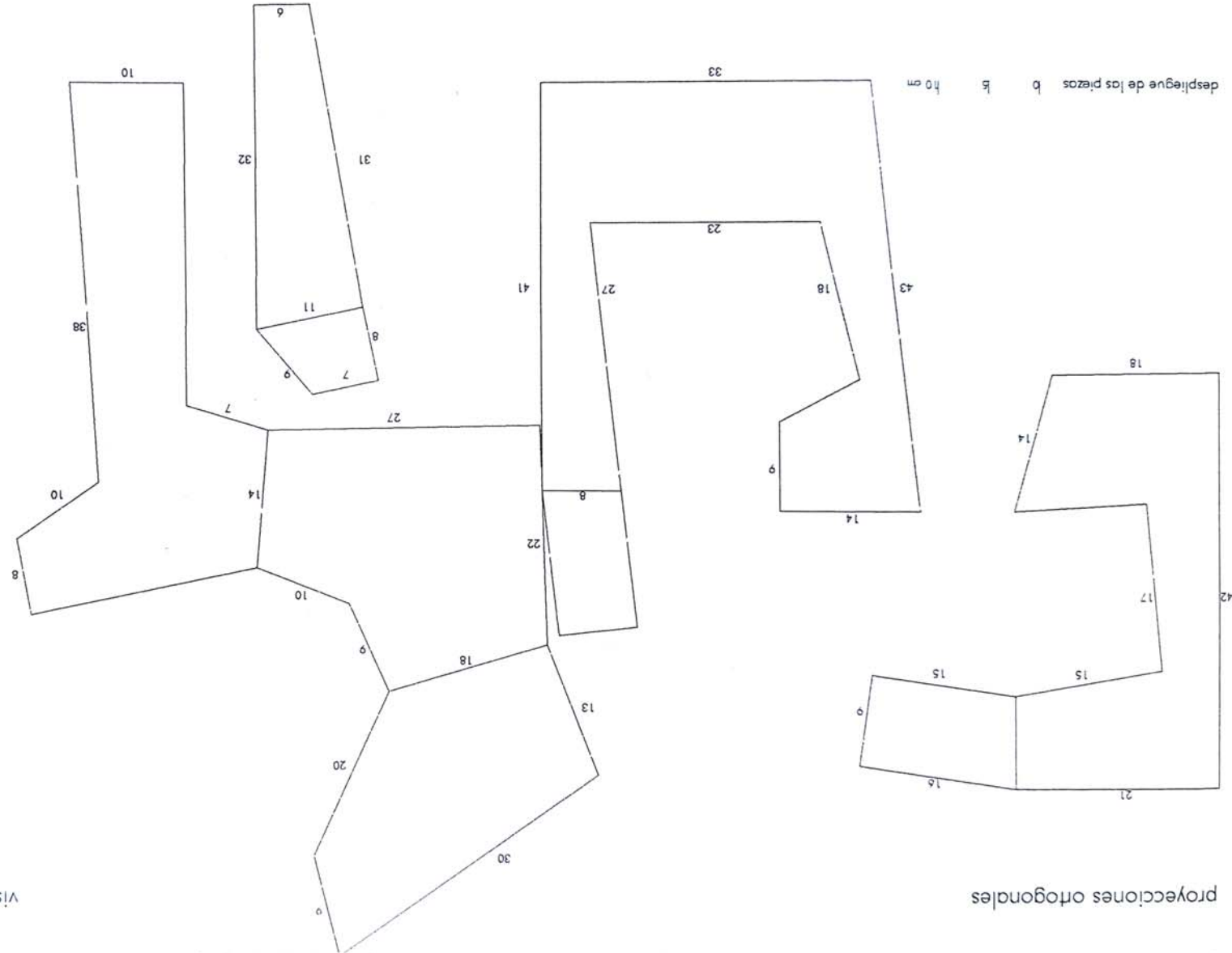
2



3



4



proyecciones ortogonales

despliegue de las piezas b b h o m



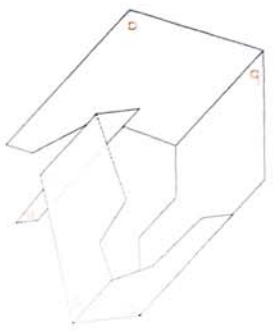
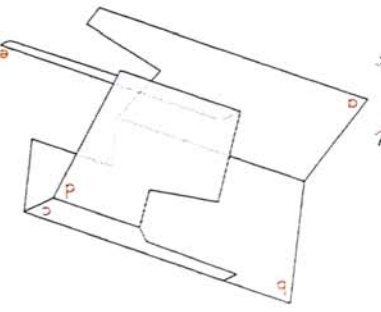
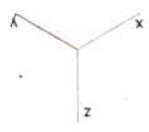
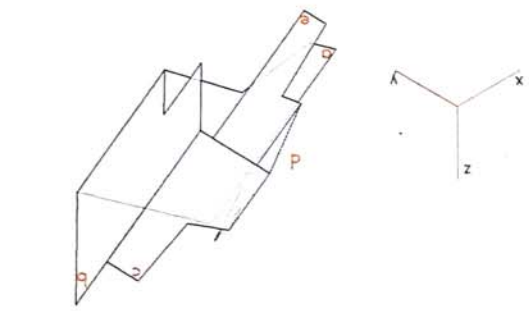
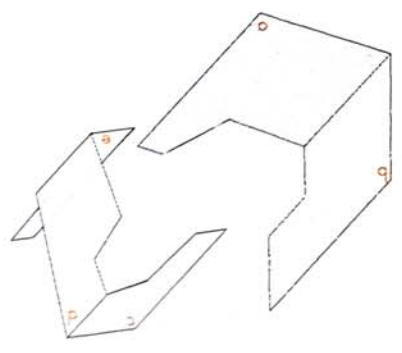
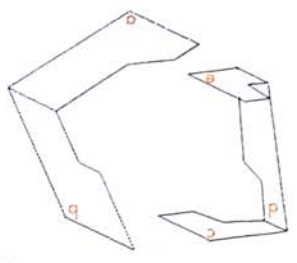
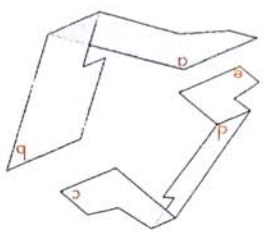
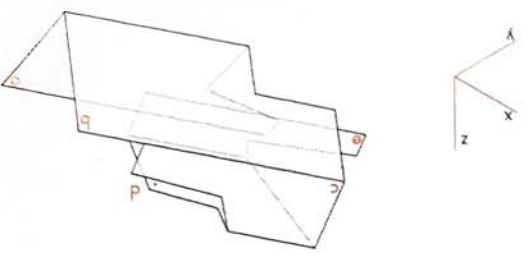
planta

alzado a

alzado b

alzado c

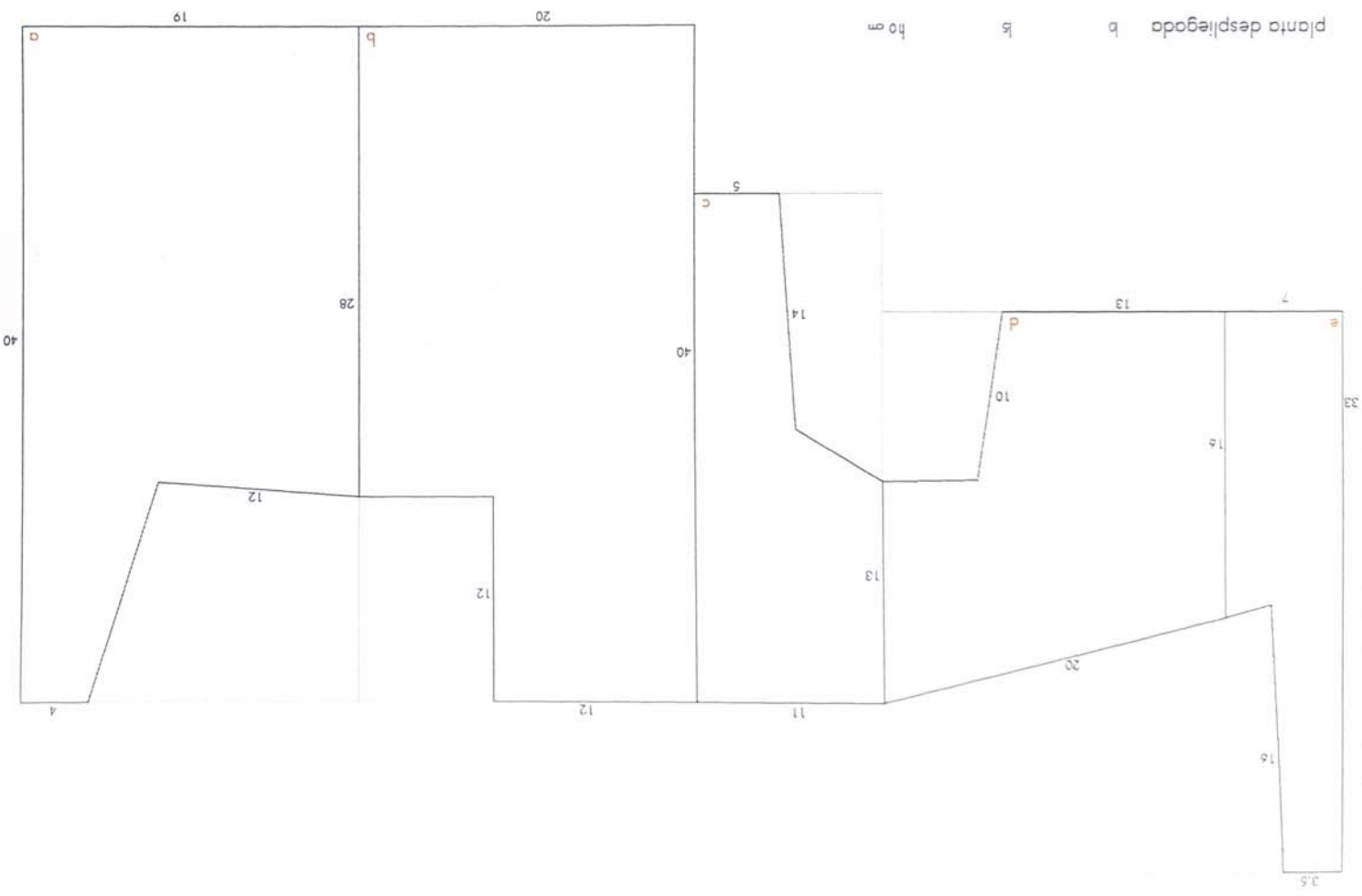
alzado d



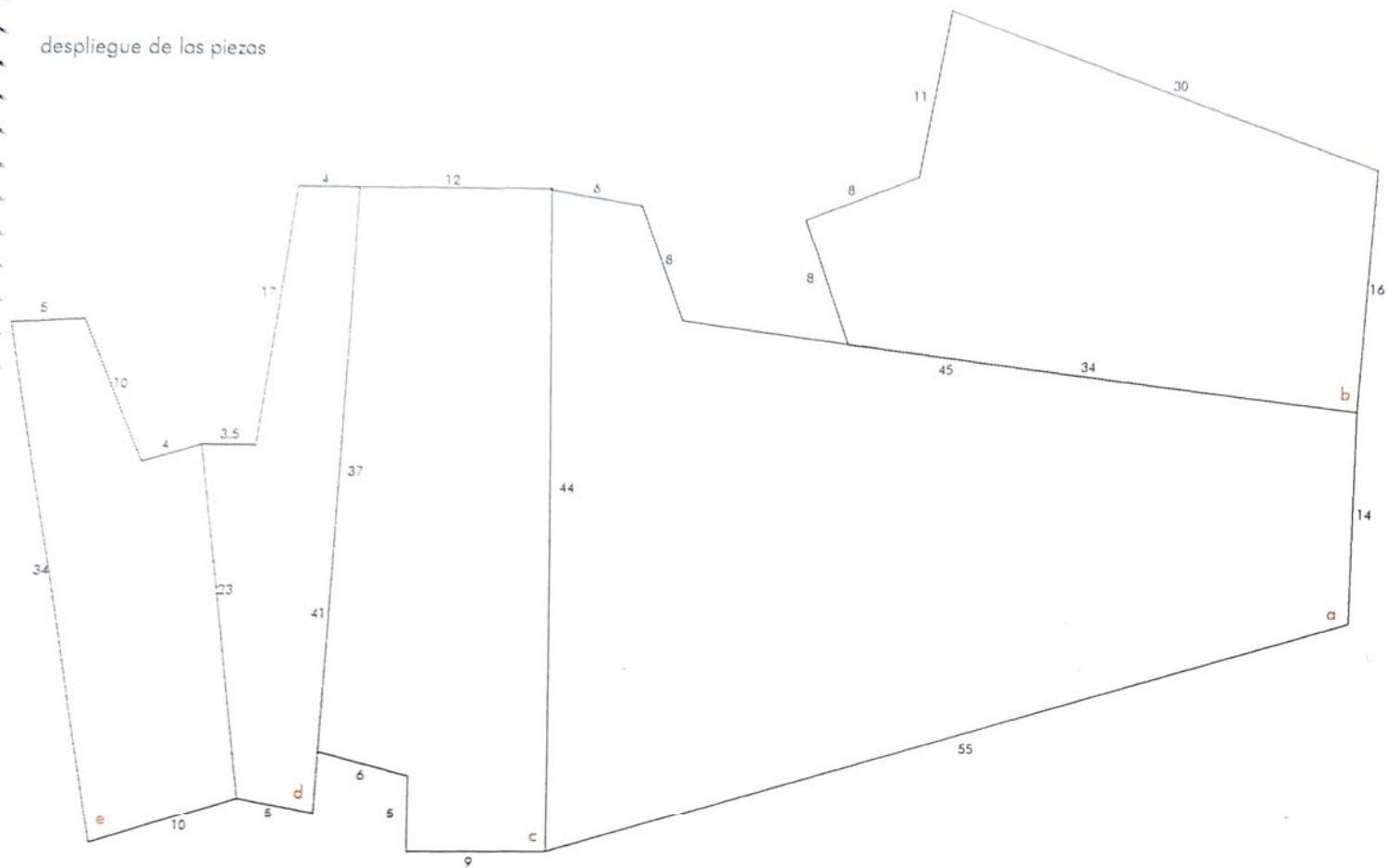
vistas axonométricas

diedros y triedros: montaje

planta desplegada b h o m

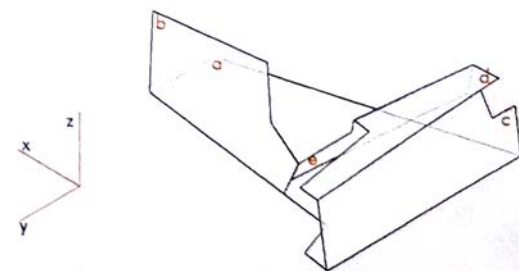
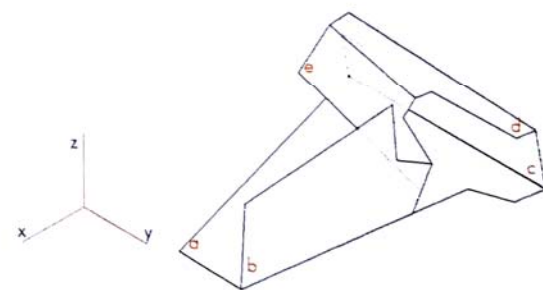
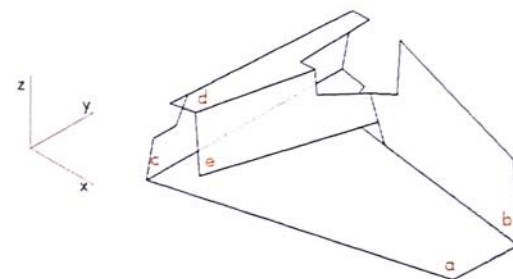
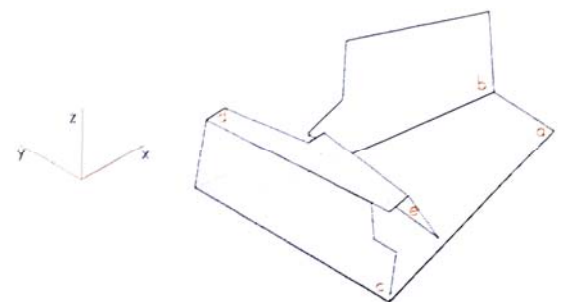


despliegue de las piezas



10 15 110 cm

vistas axonométricas



diedros y triedros: montaje

