

Pyometra in Small Animals 2.0



Ragnvi Hagman, DVM, PhD

KEYWORDS

- Endometritis • Cystic endometrial hyperplasia • Sepsis • Aglepristone
- Prostaglandin • Cabergoline • Bromocriptine • Epidemiology

KEY FACTS

- Pyometra is a potentially life-threatening illness in middle-aged to older female pets. It is common in bitches and queens and usually diagnosed within 4 months of estrus.
- Hormones and bacteria are involved in the disease development, and progesterone plays a key role. Disorders of the endometrium such as cystic endometrial hyperplasia (CEH) are considered predisposing factors, but pyometra and CEH can develop independently.
- There are considerable age- and breed-related differences in the occurrence of pyometra, and genetic factors may contribute to an increased vulnerability in high-risk breeds.
- The diagnosis is based on case history, clinical signs and findings on physical examination, hematology and biochemistry laboratory tests, and diagnostic imaging identifying intrauterine fluid.
- Peritonitis, endotoxemia, and systemic inflammatory response syndrome are common complications of pyometra and are associated with more severe illness. Several biomarkers and inflammatory variables have been identified that may be valuable for diagnosis, prognostication, and treatment evaluation.
- The safest and most effective treatment of pyometra is surgical ovariohysterectomy, which directly removes the source of infection and prevents recurrence. Purely medical (pharmacologic) treatment can be an alternative in younger and otherwise healthy breeding animals with open cervix pyometra and without other uterine or ovarian pathologies.



Video content accompanies this article at <http://www.vetsmall.theclinics.com>.

INTRODUCTION

Pyometra, literally meaning "pus-filled uterus," is a common illness in adult intact female dogs and cats and a less frequent diagnosis in other small animal species.^{1,2} The disease is characterized by an acute or chronic suppurative bacterial infection of the uterus after estrum with accumulation of inflammatory exudate in the uterine lumen

Department of Clinical Sciences, Swedish University of Agricultural Sciences, PO Box 7054, Uppsala SE-75007, Sweden

E-mail address: Ragnvi.Hagman@slu.se

Vet Clin Small Anim 52 (2022) 631–657

<https://doi.org/10.1016/j.cvs.2022.01.004>

vetsmall.theclinics.com

0195-5616/22/© 2022 The Author(s). Published by Elsevier Inc. This is an open access article under the CC BY license (<http://creativecommons.org/licenses/by/4.0/>).

and a variety of clinical and pathologic manifestations, locally and systemically.³ The disease develops during the luteal phase, and progesterone plays a key role for the establishment of infection with ascending opportunistic bacteria. The pathogen most often isolated from pyometra uteri is *Escherichia coli* (*E. coli*).^{4–6} A wide range of clinical signs are associated with the disease, which can be life-threatening in severe cases. It is important to seek immediate veterinary care when pyometra is suspected because a patient's status may deteriorate rapidly and early intervention increases chances of survival. The diagnosis is generally straightforward but can be challenging when there is no vaginal discharge and obscure clinical signs. Surgical ovariectomy (OHE) is the safest and most efficient treatment, but purely medical alternatives may be an option in some cases.

EPIDEMIOLOGY AND RISK FACTORS

Pyometra is an important disease, particularly in countries where elective neutering of healthy dogs and cats is not generally performed.^{1,2,7} In Sweden, an average 20% of all bitches are diagnosed before 10 years of age and more than 50% in certain high-risk breeds. The disease generally affects middle-aged to older bitches, with a mean age at diagnosis of 7 years, and has been reported in dogs from 4 months to 18 years of age. The overall incidence rate is 199 per 10,000 dog-years at risk.⁷ In cats, pyometra is not as common, which is believed to depend on less progesterone dominance due to seasonality and induced ovulation. In queens, 2.2% are diagnosed with the disease before 13 years of age, with an incidence rate of 17 cats per 10,000 cat-years at risk.² The mean age at diagnosis is 5.6 years, with an age range of 10 months to 20 years, and the incidence increases with age and markedly over 7 years of age.^{2,8,9} There are age- and breed-related differences in the occurrence of pyometra in dogs, *i.e.* some breeds develop the illness at an earlier age and in a larger proportion than other breeds.^{1,7} Breed differences have also been reported in cats diagnosed with pyometra.² The clear breed predisposition suggests that genetic risk factors are involved in disease development (**Tables 1 and 2**).^{1,2,7,9–12} In the golden retriever, a breed that has increased risk of pyometra, a genome-wide significant association to a region on chromosome 22, localized in the *ABCC4* gene, was recently identified.¹⁰ The findings suggests a potential causal function of this gene, which encodes a prostaglandin transporter, to the development of pyometra, but that the complex disease likely is promoted by several genetic risk factors.

Exogenous treatments with steroid hormones, such as progestogens, or estrogen compounds that increase the response to progesterone are associated with increased risk of the disease.^{12,13} Pregnancy is slightly protective in dogs, an effect that is also influenced by breed.¹⁴ Cystic endometrial hyperplasia (CEH) is believed to increase the uterine susceptibility for infection.^{15,16} In cats, little is known about risk factors and protective factors but previous hormone therapy (*ie*, exogenous progesterone) is associated with an increased risk.¹⁷

CAUSE AND PATHOGENESIS

The complex pathogenesis of pyometra is not yet completely understood but involves both hormonal and bacterial factors. Although most studies have been done in dogs, the development is believed similar in cats. The uterine environment during the luteal phase is suitable for pregnancy but also for microbial growth. Progesterone stimulates growth and proliferation of endometrial glands, increased secretion, cervical closure, and suppression of myometrial contractions.¹⁵ The local leukocyte response and uterine resistance to bacterial infection also become decreased.^{18–20} Circulating

Table 1
The 10 dog breeds with highest and lowest risk of developing pyometra, expressed as proportion of bitches per breed that had developed the disease before the age of 10 years, out of the total number of bitches in that breed, as investigated in Swedish insurance data

Dog Breed at High Risk at < 10 y of Age	Proportion (%)
Bernese Mountain Dog	66
Great Dane	62
Leonberger	61
Rottweiler	58
Irish Wolfhound	58
Staffordshire Bull Terrier	54
Keeshond	52
Bull Terrier	52
Bouvier des Flandres	50
Newfoundland	50
Dog Breed at Low Risk at < 10 y of Age	
Finnish Spitz	3
Norrbotten Spitz	4
Coton de Tulear	5
Maltese	8
Gordon Setter	8
Laika	8
Saluki	10
Tibetan Terrier	10
Lancashire Bull Terrier	10
Norwich Terrier	11

Adapted from Jitpean S, Hagman R, Strom Holst B, et al. Breed variations in the incidence of pyometra and mammary tumours in Swedish dogs. *Reprod Domest Anim* 2012; 47(Suppl 6):347-350; with permission.

Table 2
Proportion of queens diagnosed with pyometra before the age of 10 years in different breeds/breed groups, as investigated in Swedish insurance data

Cat Breed/Breed Group and Risk at < 10 y of Age	Pyometra (%)
All breeds	2.2
Norwegian Forest cat	14.8
Birman	3.1
Persian group	3.4
Siamese group	8.8
Domestic cat	0.9

Adapted from Hagman R, Strom Holst B, Moller L, et al. Incidence of pyometra in Swedish insured cats. *Theriogenology* 2014;82:114-120; with permission.

concentrations of estrogen and progesterone are not usually abnormally elevated in pyometra, and increased numbers and sensitivity of hormone receptors are believed to initiate an amplified response.^{21,22} Simultaneous corpora lutea and follicular cysts are more often found in bitches with pyometra, supporting a synergistic hormonal effect.²³

Progesterone-mediated pathologic proliferation and growth of endometrial glands and formation of cysts (ie, CEH) is believed to predispose for pyometra but the 2 disorders can develop independently (Fig. 1).²⁴ Sterile fluid may accumulate in the uterine lumen, with or without CEH, which is defined as hydrometra or mucometra or, more rarely, hemometra, depending on the type of fluid and its mucin content. Clinical signs are generally subclinical or mild when there is no bacterial infection of the uterus.^{3,25,26} Pseudoplacental endometrial hyperplasia, with the endometrium organized in a placenta-like pattern, has been associated with pyometra, but its role in the development is not precisely known.^{27,28}

E coli is the predominant pathogen isolated from pyometra uteri, but other species may also occur (Table 3).^{4,29–32} More than one bacterial species can be involved, and cultures are sometimes negative.^{31,32} Emphysematous pyometra is caused by gas-producing bacteria.³³ A healthy uterus eliminates bacteria that have entered during cervical opening, but the clearance capacity varies depending on the estrus cycle stage. Experimental *E coli* infection during the luteal phase more often leads to CEH/pyometra compared with other estrus cycle stages.³⁴ The infection is most likely ascending because the same strains are present in the gastrointestinal tract, but hematogenous spread could possibly also occur.^{6,35,36} *E coli* are natural inhabitants of the vaginal flora³⁷ and have an increased ability to adhere to specific receptors in a progesterone-stimulated endometrium.⁵ The glycosylation of the endometrium may also facilitate bacterial attachment.³⁸ Certain serotypes of *E coli* are more common and often exhibit the same virulence traits as isolates from urinary tract infections.^{39–41} The ability to produce biofilm may be important for *E coli* in pyometra.^{42,43} The same bacterial clone can frequently be isolated from the uterus and the urinary bladder in pyometra.^{5,6,36}

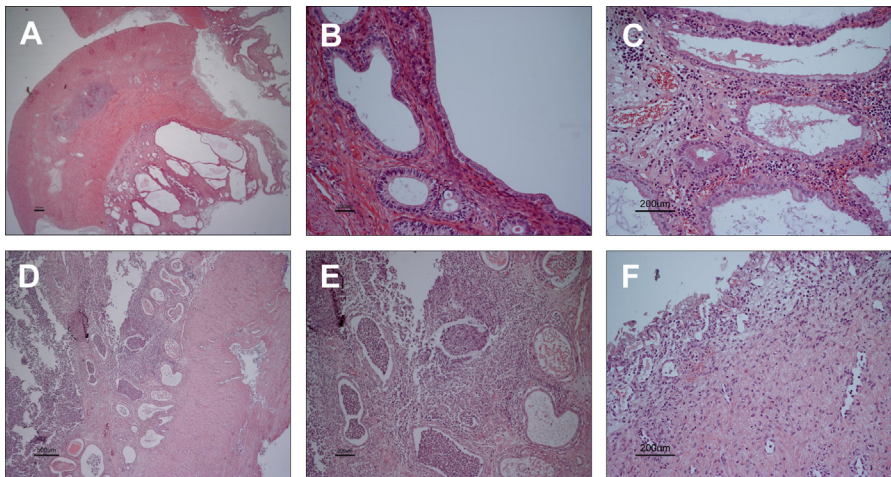


Fig. 1. Images of histologic examination findings in uterine tissues examples from dogs with CEH/pyometra. (A) CEH; (B) larger magnification of (A); (C) CEH-endometritis; (D) pyometra; (E) larger magnification of (D); (F) pyometra-atrophic endometrium.

Table 3
Bacterial species isolated from the uterus in bitches and queens with pyometra

Organism	Proportion in Bitches (%)	Proportion in Queens (%)
<i>Escherichia coli</i>	65–90	71
<i>Staphylococcus</i> spp	2–15	8
<i>Streptococcus</i> spp	4–23	19
<i>Pseudomonas</i> spp	1–8	—
<i>Proteus</i> spp	1–4	—
<i>Enterobacter</i> spp	1–3	—
<i>Nocardia</i> spp	1	0
<i>Pasteurella</i> spp	1–2	<1
<i>Klebsiella</i> spp	2–14	<1
Mixed culture	4–16	—
No growth	10–26	20
<i>Mycoplasma</i> spp, <i>Enterococcus</i> spp, <i>Clostridium perfringens</i> , <i>Corynebacterium</i> spp, <i>Citrobacter</i> spp, <i>Moraxella</i> spp, <i>Edwardsiella</i> spp, and others	<1	<1

Data from Refs. ^{4,5,8,9,11,31,33,54,60–62,102}.

Bacteria and bacterial products are potent inducers of local and systemic inflammation. Endotoxins, lipopolysaccharide component of gram-negative bacteria such as *E coli*, are released into the circulation during bacterial disintegration and induce fever, lethargy, tachycardia, and tachypnea.^{44–46} Higher endotoxin concentrations may cause fatal shock, disseminated intravascular coagulation, and generalized organ failure.^{46,47} Pyometra has been associated with endotoxemia^{47,48} and bacteremia,⁴⁹ and disseminated infection may affect various organs.^{50,51} Approximately 60% of bitches and 86% of queens with pyometra suffer from sepsis (ie, life-threatening organ dysfunction caused by a dysregulated host response to an infectious process).^{52,53} The illness is considered a medical emergency, and it is important to seek immediate veterinary care because a patient's health status may deteriorate rapidly.

CLINICAL PRESENTATION

Typically, middle-aged to older animals are presented up to 2 months to 4 months after estrus with a history of various signs associated with the genital tract and systemic illness (Table 4). A continuous or intermittent mucopurulent to hemorrhagic vaginal discharge is often present but can be absent if the cervix is closed.⁵⁴ The systemic illness is often more severe if the cervix is closed, and the uterus may become severely distended.⁵⁵ Classic systemic signs are anorexia, depression/lethargy, polydipsia, polyuria, tachycardia, tachypnea, weak pulse quality, and abnormal visible mucous membranes. Fever, dehydration, vomiting, abdominal pain on palpation, anorexia, gait abnormalities, and diarrhea are present in approximately 15% to 30% of bitches with the disease.^{54,56} The most common clinical signs in queens are vaginal discharge, lethargy, and gastrointestinal disturbances, such as anorexia, vomiting, and diarrhea

Table 4 History data and clinical signs in bitches with pyometra	
Case History and Clinical Signs	In Percentage (%)
Vaginal discharge ^a	57–88
Lethargy/depression ^a	63–100
Inappetence/anorexia ^a	42–87
Polydipsia ^a	28–89
Polyuria ^a	34–73
Vomiting	13–38
Diarrhea	0–27
Abnormal mucous membranes	16–76
Dehydration	15–94
Palpable enlarged uterus	19–40
Pain on abdominal palpation	23–80
Lameness	16
Distended abdomen	5
Fever	32–50
Hypothermia	3–10
Tachycardia	23–28
Tachypnea	32–40
Systemic inflammatory response syndrome	57–61

^a Usually in greater than 50% of the bitches.

Data from Refs. ^{25,26,55,56,61,102,118}

(Fig. 2).^{8,11} Vaginal discharge may be absent or concealed by fastidious cleaning habits in up to 40% of affected queens.⁹ Weight loss, dehydration, polydipsia/polyuria, tachycardia, tachypnea, abdominal pain on palpation, abnormal mucous membranes (pale, hyperemic, or toxic), and unkept appearance are other findings associated with feline pyometra.



Fig. 2. Purulent vaginal discharge in a queen with open cervix pyometra.

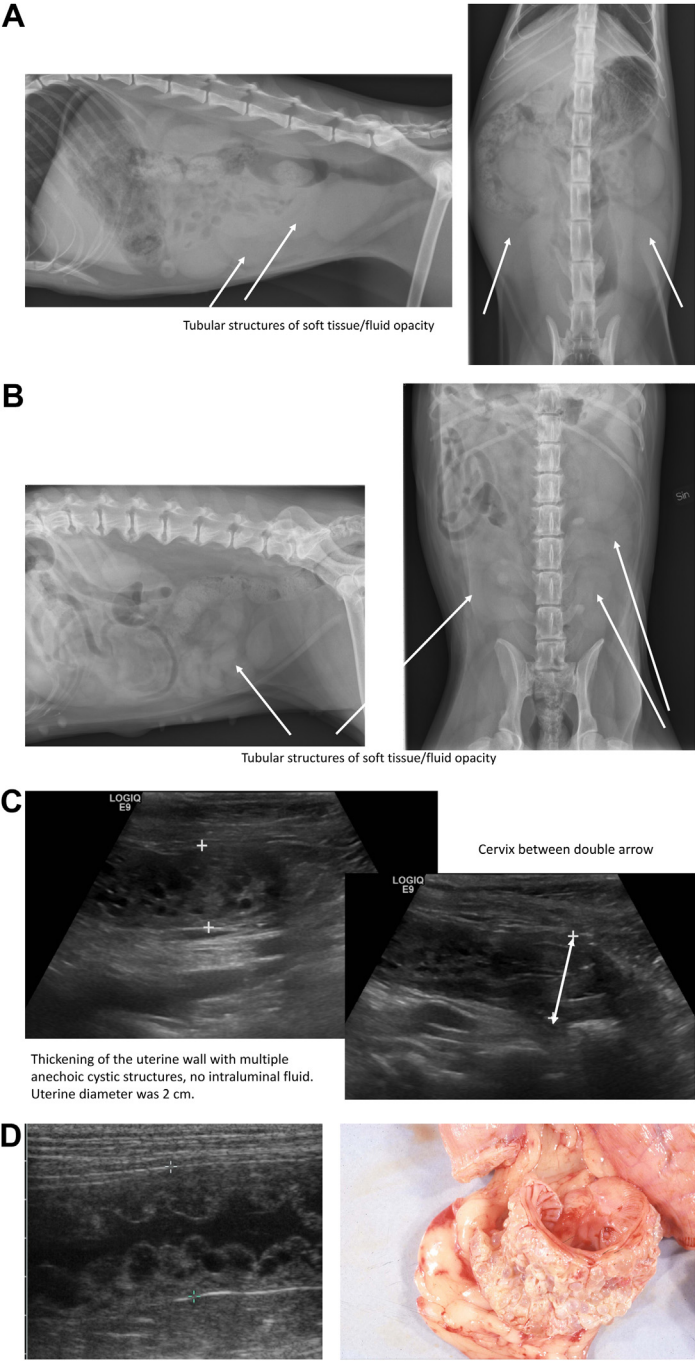


Fig. 3. (A) Uterine enlargement in a cat; diagnosis: pyometra. Tubular structures of soft tissue/fluid opacity (arrows). (B) Uterine enlargement in a dog; diagnosis: CEH. Tubular structures of soft tissue/fluid opacity (arrows). (C) Ultrasound images of CEH in a dog. Thickening of the uterine wall with multiple anechoic cystic structures, no intraluminal fluid. Uterine diameter was 2 cm.

DIAGNOSIS

The disease is easy to recognize in classic cases but can be more challenging when there is no vaginal discharge (ie, closed cervix), and the history and clinical picture are obscure. Pyometra should be a differential diagnosis in bitches and queens admitted with signs of illness after estrus, but the disease can occur at any time during the estrus cycle. The preliminary diagnosis is based on history and findings on physical and gynecologic examinations, hematology and blood biochemistry analyses, and ultrasonography and/or radiography of the abdomen. Bacteriologic culturing of the vaginal discharge is not helpful for the diagnosis because the same microbes are present in the vagina in healthy animals.⁵⁷ Careful abdominal palpation, to avoid rupture of a fragile uterus, may identify an enlarged uterus. Diagnostic imaging is valuable for determining the uterine size and to rule out other causes of uterine enlargement (**Fig. 3**). Radiography frequently identifies a large tubular structure in the caudoventral abdomen. Ultrasonography has the advantage of detecting intrauterine fluid, even when the uterine diameter is within the normal range, and of revealing additional pathologic changes of the uterine tissue and ovaries, such as ovarian cysts or CEH, which may affect the outcome of medical treatment negatively (**Fig. 4, Video 1**). In emphysematous pyometra, the gas-filled uterus is visible on diagnostic imaging (**Fig. 5**).^{33,58} More advanced diagnostic imaging techniques are seldom necessary. Differential diagnoses include mucometra, hydrometra, and hemometra that may have similar clinical presentation and ultrasonography findings.⁵⁹ Vaginal cytology usually shows severe leukocyte degeneration, neutrophils and some macrophages, plasmacytes, and lymphocytes but bacterial phagocytosis is not always visible.⁶⁰ Vaginoscopy is helpful for determining the origin of a vaginal discharge and to exclude other pathologies but is usually not performed in the emergent clinical setting. The diagnosis pyometra is verified by postoperative macroscopic and histologic examination of the uterus and ovaries and microbiological examination of the uterine content.

CLINICOPATHOLOGIC TESTING—LABORATORY PARAMETERS

Hematology and biochemistry parameter abnormalities are generally investigated,^{56,61} with additional tests performed depending on the health status (**Table 5**). Leukocytosis, with neutrophilia and left shift, and monocytosis are characteristic findings in pyometra together with normocytic and normochromic regenerative anemia. Renal dysfunction is common, to which endotoxemia, glomerular dysfunction, renal tubular damage, and decreased response to antidiuretic hormone contribute.^{62,63} Concomitant cystitis and proteinuria usually resolve after treatment of the pyometra, but severe proteinuria that remains may predispose for renal failure.⁶² Circulating inflammatory mediators and acute phase proteins are generally increased.^{64,65} A hypercoagulable state is usually present.⁶⁶

diameter was 2 cm. Cervix located between double-headed arrow. (D) CEH and pyometra—thickening of the uterine wall with multiple anechoic cystic structures; the intraluminal fluid was purulent. Both images in (D) are of the same uterus. The uterine diameter was 2 cm. (E) CEH in a rabbit. (F) Atrophic wall pyometra: enlarged uterus with a thin wall and echogenic intraluminal fluid. (G) Uterus or small intestines of the same diameter (radiograph to the left). Uterus between white double-headed arrow, CEH. Small intestine with typical layered appearance between black double-headed arrow.

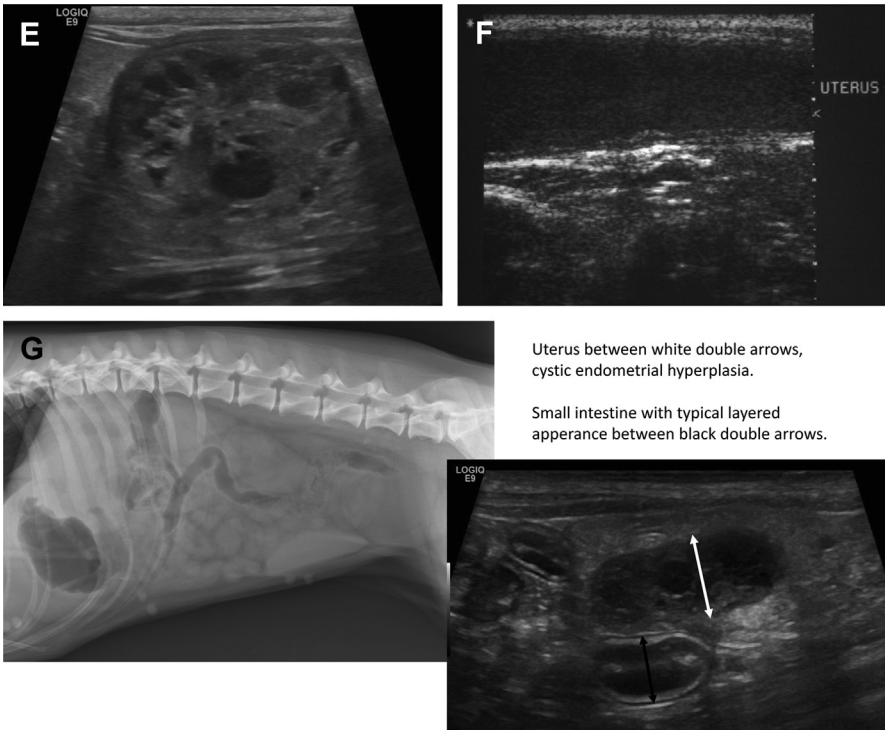


Fig. 3. (continued).

TREATMENT ALTERNATIVES

Surgical treatment, OHE, is safest and most effective because the source of infection and bacterial products are removed and recurrence prevented.⁶¹ Laparoscopically assisted techniques have been developed but are not commonly used and only in

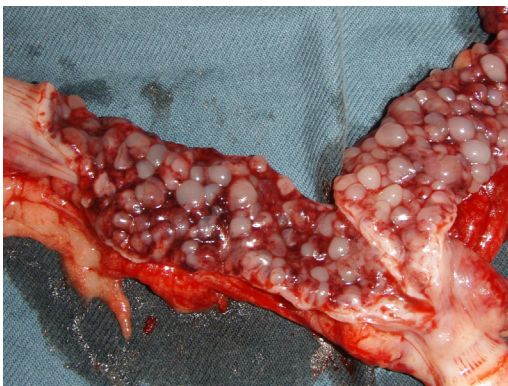


Fig. 4. Canine uterus with CEH and purulent appearance of the fluid in some cysts.

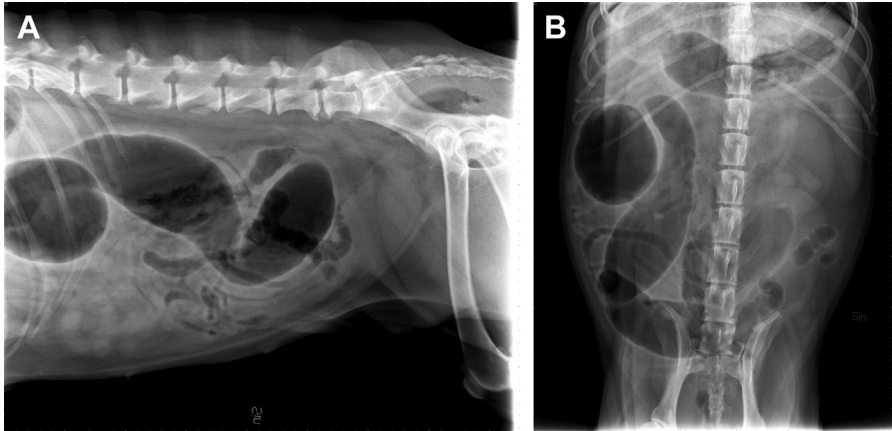


Fig. 5. (A, B) Canine emphysematous pyometra, radiography images.

mild cases.⁶⁷ Medical management (solely pharmacologic) may be possible in young and otherwise healthy breeding animals or in a patient for whom anesthesia and surgery are hazardous. In patients with serious illness or when complications, such as peritonitis or organ dysfunctions, are present or the cervix is closed, medical treatment is not recommended and surgery is the treatment of choice. Candidates for medical treatment need to be carefully selected for best prognosis for recovery and subsequent fertility.⁶⁸ Microbiological culturing and sensitivity testing are prerequisites for optimal selection of antimicrobial therapy, for which samples are obtained from the cranial vagina or postoperatively from the uterus.

SURGICAL TREATMENT

Before surgery, the patient is stabilized with adequate intravenous fluid therapy to correct hypotension, hypoperfusion, shock, dehydration, acid-base balance and electrolyte abnormalities, coagulation disturbances, and organ dysfunctions.⁶⁹ Monitoring and intervention in critically ill patients following parameters according to the "rule of 20" is recommended.⁷⁰ In moderately to severely and severely ill patients, or if sepsis or serious complications are identified, intravenous broad-spectrum bactericidal antimicrobials are administered to prevent systemic effects of bacteremia and sepsis.⁷¹ The initial choice of antimicrobial drug should be effective against the most common pathogen *E coli* and adjusted after culture and sensitivity results to a narrow-spectrum alternative.⁷¹ The drug should not be nephrotoxic, and the dose, route, and frequency of administration are adjusted to ascertain optimal effect. In one study, 90% of *E coli* pyometra isolates were sensitive to ampicillin.⁴ The frequency of antimicrobial resistance, however, may differ by geographic location, which needs to be considered, and national regulations concerning restriction of antimicrobial usage in pets should be followed.^{30,35} In life-threatening peritonitis, severe sepsis, or septic shock, a combination of antimicrobials is usually recommended for covering a wider range of pathogens.⁷¹ If the health status is close to normal or only mildly depressed and without complications or concurrent diseases, OHE is curative for pyometra per se and antimicrobials not included in the perioperative supportive treatment.

Removal of the infection is key, and surgery should not be unnecessarily delayed due to the risk of endotoxemia and sepsis when the uterus remains in situ. Anesthesia and perioperative management are focused on maintaining hemodynamic function,

Table 5
Laboratory findings in bitches with pyometra

Abnormality	In No. of Bitches (%)
Leukopenia	4
Leukocytosis	61
Neutropenia	4
Neutrophilia	55
Monocytopenia	3
Monocytosis	60
Anemia	55
Band neutrophils	40
Band neutrophils >3%	83
Trombocytopenia	37
Toxic changes present	9
Increased ALAT	22
Hypoalbuminemia	33
Decreased ALP	49
Increased ALP	37
Increased AST	64
Cholesterolemia	74
Hypernatremia	29
Hypochloremia	2
Hypochloremia	33
Azotemia	5
BUN decreased	10
BUN increased	5
Bile acids increased	21
Hypoglycemia	6
Hyperglycemia	4
Hypokalemia	4
Hypercalcemia	6
Hypokalemia	25
Hyperlactatemia	10
Urine enzymes increased	42
Bacteriuria	25

Abbreviations: ALAT, alanine aminotransferase; ALP, alkaline phosphatase; AST, aspartate transaminase; BUN, blood urea nitrogen.

Data from Refs. ^{25,56,62}.

gastrointestinal function and protection, pain management, cellular oxygenation, nutrition, and nursing care.⁷² Certain drugs may alleviate the inflammatory response.⁷³ A standard OHE is performed with some modifications.^{17,74} The uterus may be large, friable, and prone to rupture, and it is important to handle the tissues carefully (**Figs. 6–11**). The abdominal cavity should be protected from accidental leakage of pus via uterine



Fig. 6. Canine pyometra uterus.

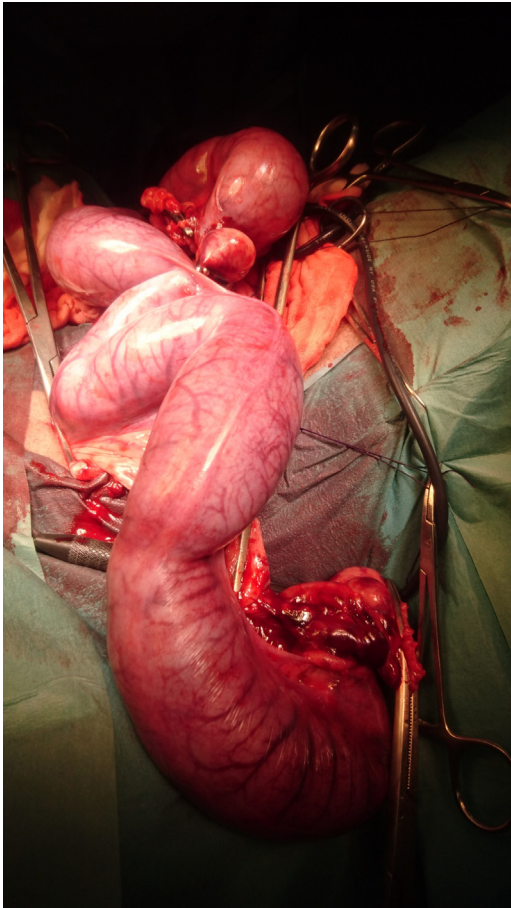


Fig. 7. Canine pyometra uterus.

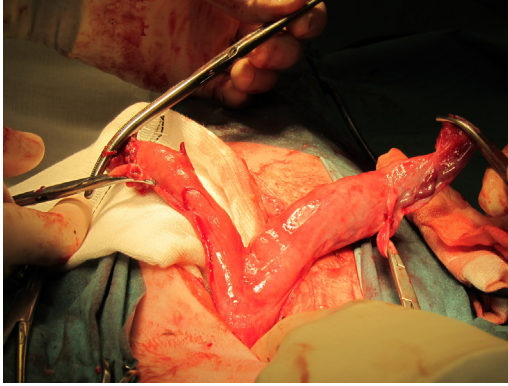


Fig. 8. Feline pyometra uterus.

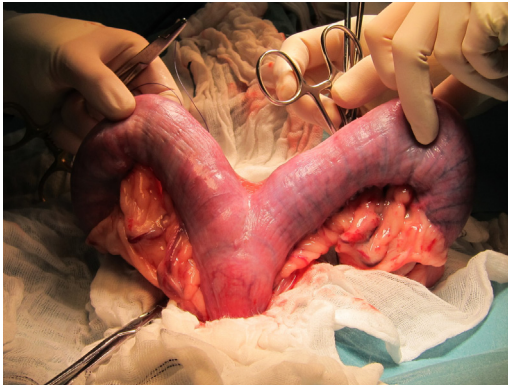


Fig. 9. Canine pyometra uterus.

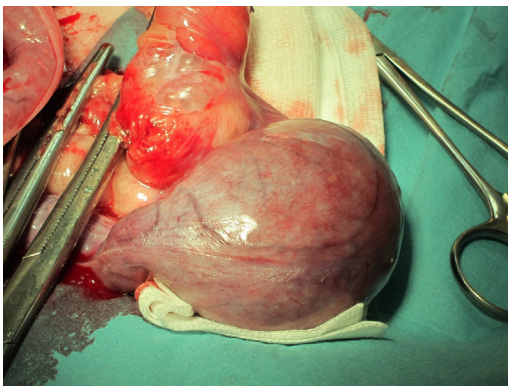


Fig. 10. Canine pyometra uterus.

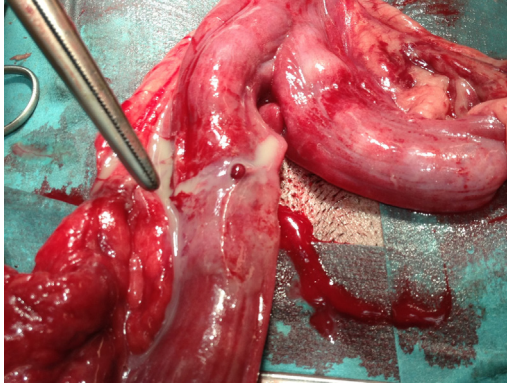


Fig. 11. Canine pyometra uterus with rupture and leakage of pus showing at the tip of the clamp.

laceration or the fallopian tubes/ovarian bursa opening by packing off the uterus with moistened laparotomy swabs (see **Fig. 11**). Vessels in the broad ligament are usually ligated. Purulent material is completely removed from the remaining cervical tissue stump, which is not oversewn. Urine for bacterial culturing can be obtained by cystocentesis when the bladder is exposed. The abdomen is routinely closed but if contaminated with pus this should be removed and the abdomen rinsed with several liters of warmed physiologic saline solution and a closed suction (or open) drainage considered.^{72,74} Samples for bacterial culturing are acquired before abdominal closure if needed. For verification of the diagnosis, macroscopic and histopathologic examination of the uterus and ovaries is performed.

Intensive postoperative monitoring is essential, and in uncomplicated cases 1 day to 2 days of postoperative hospitalization is usually sufficient. The need for continued supportive care and antimicrobial therapy is evaluated several times daily on a case-by-case basis.⁶⁴ Antimicrobial therapy is discontinued as soon as possible. The overall health status and most laboratory abnormalities improve rapidly after surgery and often normalize within 2 weeks.^{64,75}

Considering the seriousness of pyometra, the prognosis for survival is good and mortality rates relatively low, 3% to 20%.^{1,9,56,76} If more severe systemic illness or complications, such as uterine rupture, peritonitis, or septic shock, develop, however, mortality rates can be considerably higher.^{9,71,77} In queens with pyometra and uterine rupture, a mortality rate of 57% has been reported.⁸ Complications develop in approximately 20% of patients with pyometra, the most common peritonitis, in 12%.^{9,50,51,56,78} Other reported complications include uveitis, urinary tract infection, intracranial thromboemboli, bacterial osteomyelitis, pericarditis, myocarditis, septic arthritis, incisional swelling, dehiscence, urethral trauma, recurrent estrus, uterine stump pyometra, fistulous tracts, and urinary incontinence.^{50,51,62}

MEDICAL (NONSURGICAL) TREATMENT

For purely medical (pharmacologic) management, careful patient selection is central to ensure the best possible outcome (ie, resolution of clinical illness and maintained fertility). Suitable candidates are young and otherwise healthy breeding bitches and queens with open cervix and that have no ovarian cysts. It is important that the patients are stable and not critically ill, because it may take up to 48 hours until treatment

effect for some drugs used.⁷⁹ Contraindications include systemic illness, fever or hypothermia, intrauterine fetal remains, organ dysfunctions, or complications, such as peritonitis or sepsis. Adverse drug effects may occur, and endotoxemia and sepsis can quickly transform a clinically stable pyometra to an emergency. Hospitalization is therefore recommended to allow close monitoring, supportive treatments, and rapid intervention. Clinical signs, reduction, and clearing of the vaginal discharge; the uterine size; and laboratory abnormalities gradually normalize in 1 to 3 weeks.³⁰ OHE may be necessary without delay if complications arise or the general health status deteriorates and in refractory cases. Antimicrobials alone for treatment of pyometra may reduce the disease and prevent its progression but does not result in uterine healing.

The strategies of medical treatment are to minimize effects of progesterone by preventing its production and/or action, eliminate the uterine infection, promote relaxation of the cervix and expulsion of the intraluminal pus, and facilitate uterine healing. Commonly used drugs are natural prostaglandin $F_{2\alpha}$ ($PGF_{2\alpha}$) or its synthetic analogue cloprostenol, dopamine agonists (cabergoline and bromocriptine), or progesterone-receptor blockers (aglepristone)⁸¹ (Tables 6 and 7). The available protocols for purely medical treatment of pyometra include systemic antimicrobial therapy, often recommended for 2 weeks or more.⁸² The shortest effective duration of adjunctive antimicrobial therapy, however, has not been determined, and 5 days and 6 days were sufficient in 2 studies using aglepristone.^{79,83} The antimicrobial drug and administration protocol should be based on bacterial culturing, sensitivity tests, and pharmacokinetics/pharmacodynamics for achieving optimal effect. Additional supportive treatment, including intravenous fluids and electrolyte supplementation, is provided depending on physical examinations and laboratory tests results.

$PGF_{2\alpha}$ is luteolytic and uterotonic and stimulates smooth musculature. Side effects, such as hypothermia, frequent defecation, diarrhea, salivation, vomiting, restlessness, shivering, and depression, are common and dose dependent and may last for approximately 1 hour after administration.⁸⁴ $PGF_{2\alpha}$ should be administered far from feeding to reduce the risk of vomiting. Treatment with metoclopramide or walking the bitch for 15 minutes to 20 minutes after administration has been suggested to lessen nausea and vomiting.^{81,85} Serious adverse effects of the drug ($PGF_{2\alpha}$), such as death, shock, and ventricular tachycardia, have been reported and the therapeutic window is narrow, which is why dosage calculations should be done meticulously. It is therefore very important to choose the lowest possible effective dose and hospitalize patients during treatment of monitoring and immediate intervention if severe side-effects develop. Brachycephalic breeds may be predisposed to bronchospasm, making $PGF_{2\alpha}$ contraindicated.^{83,85} Owner consent, with information of potential risks, is necessary to obtain before extralabel drug usage. Several protocols are still considered experimental, because efficiency and optimal dosages have not yet been established. For natural $PGF_{2\alpha}$, i.e. dinoprost tromethamine, subcutaneous administration of 0.1 mg/kg every 12 hours to 24 hours until resolution is the dose generally recommended in bitches and queens. Despite at the lower end of the recommended range and administered once daily, this dose is associated with many undesired side effects (the recommended range includes higher doses, following evaluation of the effect of a lower dose), which is why other lower dose alternatives and drug combinations are becoming more commonly used.^{84,86} Other investigators suggest starting by giving 10 μ g/kg subcutaneously 5 times on the first day, gradually increasing the dose to 25 μ g/kg 5 times on the second day, and reaching 50 μ g/kg by day 3. Doses of 50 μ g/kg were then given 3 times to 5 times daily from day 3 and onward over the treatment period, a regime resulting in side effects in 15% of treated bitches.⁸¹ A dose of 100 μ g/kg natural $PGF_{2\alpha}$ administered subcutaneously once daily for 7 days resulted

Table 6
Examples of studies of medical treatment protocols for open cervix pyometra in dogs

Drug	N	Protocol and Dosage	Outcome and Side Effects	Reference
Aglepristone	24	Aglepristone 10 mg/kg SC q 24 h on day 2, 7 and 14	Recovery in 100%; recurrence after up to 54 mo 12%; fertility in 12% of 17 bitches mated	Jurka et al, ⁹³ 2010
Aglepristone	28	Aglepristone 10 mg/kg SC q 24 h on days 1, 2, 7, 15, and 23, 29 if not cured	Recovery in 75% (resolution of clinical signs); recurrence: 48% after up to 6 y; fertility in 69% of 13 mated bitches	Ros et al, ⁹⁴ 2014
Aglepristone	52	Aglepristone 10 mg/kg SC q 24 h on days 1, 2, and 7	Recovery in 92%; recurrence: 10% after 3 mo, 19% in 37 bitches followed-up to 1 y; fertility in 83% (5/6 mated bitches)	Trasch et al, ⁹² 2003
Aglepristone	13	Aglepristone 10 mg/kg SC q 24 h on days 1, 2, 7, and 14	Recovery in 46%	Gurbulak et al, ⁹¹ 2005
Aglepristone	20	Aglepristone 10 mg/kg SC q 24 h on days 1, 2, and 8 and if not cured on day 15	Recovery in 60%	Fieni, ⁷⁹ 2006
Aglepristone + cloprostenol	32	Aglepristone 10 mg/kg SC q 24 h on days 1, 2, and 8 and if not cured on days 14 and 28 + cloprostenol: 1 µg/kg SC q 24 h on days 3–7	Recovery in 84%; no side effect of cloprostenol in 45% of the bitches; in 56% some side effects were noted: loss of appetite, lethargy, vomiting, nausea; 19% recurrence; in closed cervix pyometra cases: recovery in 76.5%, in open cervix pyometra recovery in 74.3%; 1 euthanasia due to declining health, 1 death; Follow-up time: 90 d and up to 2 y in 23 bitches; fertility in 80% (4/5 mated bitches)	Fieni, ⁷⁹ 2006

Drug	N	Protocol and Dosage	Outcome and Side Effects	Reference
Aglepristone	73	Traditional protocol: aglepristone 10 mg/kg SC q 24 h on days 1, 2, and 7 (26 bitches). Modified protocol: aglepristone 10 mg/kg SC q 24 h on days 1, 3, 6, and 9 (47 bitches)	Recovery with traditional protocol in 88%; recurrence: 17%; fertility in 86%. Resolution of clinical signs of pyometra with modified protocol, in 100%; recurrence: 0%; fertility in 78%; follow-up after 2 y	Contri et al, ⁸³ 2015
Aglepristone + cloprostenol	15	Aglepristone 10 mg/kg SC q 24 h on days 1, 3, 8, and 15 (if not cured) + cloprostenol: 1 µg/kg SC q 24 h on days 3 and 8 (N = 8) or 1 µg/kg, SC q 24 h on days 3, 5, 8, 10, 12, and 15 (N = 7)	Recovery in 100%, recurrence: 20% by the next estrus cycle (in all 15 bitches); fertility in 100% (1 bitch mated); no side effects reported	Gobello et al, ¹⁰⁰ 2003
Cabergoline + cloprostenol	29	Cabergoline 5 µg/kg PO q 24 h + cloprostenol 1 µg/kg SC q 24 h for 7–14 d	Recovery in 83% by day 14, recurrence: 21%; fertility in 1/2 mated bitches. Mild side effects noted.	Corrada et al, ⁹⁰ 2006
Cabergoline + cloprostenol	22	Cabergoline 5 µg/kg PO q 24 h + cloprostenol 5 µg/kg every third day SC for 7–13 d	Recovery in 90.5% by day 13; recurrence: 20%; fertility in 64% of 11 bitches mated; side effects: retching, vomiting, mild abdominal straining, diarrhea, and panting up to 60 min after administration	England et al, ⁸⁰ 2007

All protocols combined with and systemic antimicrobial therapy. See the original reference for the most accurate information and more details. *Abbreviations:* N, number of bitches; PO, per os; PG, prostaglandin; recovery, resolution of pyometra; SC, subcutaneous.

Drug	N	Protocol and Dosage	Outcome and Side Effects	Reference
PGF _{2α} (natural)	21	0.1 mg/kg SC q 12–24 h for 3–5 d (6 queens); 0.25 mg/kg was used in 15 queens but was not more effective	Resolution of signs of pyometra and return to cyclicity in 95%; treatment was repeated in 1 queen; fertility in 81%; no difference between the 2 different dosages (ie, the lower dosage recommended); transient side effects observed in 76%: vocalization, panting, restlessness, grooming, tenesmus, salivation, diarrhea, kneading, mydriasis, emesis, urination, and lordosis lasting up to 60 min. Recurrence of pyometra in 14% (3 cats)	Davidson et al, ⁸ 1992
Prostaglandin F _{2α} (synthetic analogue cloprostenol)	5	5 μg/kg SC q 24 h for 3 consecutive days	Resolution of signs of pyometra in 100%; no recurrence after 1 y; fertility in 40%; transient side effects: diarrhea, vomiting, vocalization	Garcia Mitacek et al, ¹⁰¹ 2014
Progesterone receptor blocker (aglepristone)	10	10 mg/kg SC q 24 h on days 1, 2, and 7 and on day 14 (if not cured)	Resolution of signs of pyometra in 90%; no recurrence after 2 y follow-up; no side effects observed	Nak et al, ⁹⁶ 2009

See the original reference for the most accurate information and more details.

Abbreviations: IM, intramuscular administration; q, every; N, number of cats; PO, oral administration; SC, subcutaneous administration.

in recovery in 7 bitches, but many side effects were observed and lower doses are preferable.⁸⁷ Natural PGF_{2α}, 20 μg/kg, was given intramuscularly 3 times daily up to 8 consecutive days in 1 study, and 30 μg/kg was given subcutaneously twice daily for 8 days in another study, resulting in resolution of the illness in 70% of 10 bitches and 100% of 7 bitches, respectively, and no side effects.^{88,89} More recent low-dose protocols recommend subcutaneous administration of natural PGF_{2α} at a dose of 10 to 50 μg/kg every 4 to 6 hours.⁸² The synthetic PGF_{2α} analogue cloprostenol is administered at a notably lower dose than for natural PGF_{2α},⁸⁷ and accurate calculations are crucial to avoid serious side effects or fatalities. For cloprostenol, subcutaneous administration of 1 μg/kg to 3 μg/kg every 12 hours to 24 hours to resolution/effect is the recommended dose for bitches and queens.⁸⁴ Subcutaneous administration of

low-dose cloprostenol, 1 µg/kg, once daily was effective in 100% of 7 bitches in one study but with a high recurrence rate, 85%, and subsequent fertility rate of 14%.⁸⁷

The dopamine agonists cabergoline and bromocriptine are effectively luteolytic from day 25 after estrus because of their antiprolactin effects and have been used together with PGF_{2α} for augmented treatment of pyometra.^{80,81} Cabergoline usually causes less vomiting than bromocriptine, which is an advantage.^{81,82,85} Cabergoline combined with a low dose of cloprostenol led to resolution of the illness in 90.5% of 22 treated bitches with pyometra in one study.⁸⁰ In another study using cabergoline and cloprostenol, 83% of 29 bitches recovered from the illness.⁹⁰ This combination was also shown the most effective compared with only low-dose cloprostenol or natural PGF_{2α}.⁸⁶ For treatment of pyometra in cats, no clinical studies have been published on cabergoline and bromocriptine, but similar doses and regimes as for dogs have been suggested.¹⁷

The progesterone blocker aglepristone is commonly used in Europe for treatment of pyometra (see **Tables 6** and **7**) but is not currently approved for use in North America. Aglepristone binds to progesterone receptors effectively and competitively and without stimulating any of the hormone's effects. Side effects are usually rare and not severe and cervical relaxation induced within 48 hours.^{79,83,91–94} According to the recommended protocol, 10 mg/kg aglepristone is administered subcutaneously once daily on days 1, 2, and 7 or 8 and on days 14 and 28 if not cured. This protocol results in success rates of 46% to 100%, recurrence rates 0% to 48%, and subsequent fertility rates of 69% to 85%.⁹⁵ Aglepristone was administered more frequently (on days 1, 3, 6, and 9) in a modified protocol, which resulted in resolution of the illness in all 47 treated bitches and with no reported recurrence for up to 2 years.⁸³ Treatment with aglepristone resulted in resolution of pyometra in 9 of 10 queens, with no recurrence reported after 2 years and no side effects observed (see **Table 7**).⁹⁶

Local treatment methods of pyometra have been shown effective but are not yet commonly used in clinical practice in bitches and have not been reported in cats.⁹⁷ Intravaginal infusion of prostaglandins and antimicrobials yielded successful result in 15 of 17 treated bitches, without side effects or recurrence after 12 months.⁹⁸ Aglepristone, in combination with intrauterine antimicrobials, was successful in 9 of 11 bitches.⁹¹ Intrauterine drainage through transcervical catheters may facilitate recovery in refractory cases.⁹⁷ Surgical drainage and intrauterine lavage resulted in 100% of 8 treated bitches.⁹⁹ Whether prostaglandin E₂, administered intravaginally or orally, gives a cervical relaxation that is beneficial in medical treatment protocols remains to be studied.^{82,85}

PROGNOSIS AFTER MEDICAL TREATMENT

The prognosis for survival and fertility is considered guarded to good. Breeding on the subsequent estrus cycle is consistently recommended after medical treatment, to avoid recurrence. The mean reported long-term success (resolution of clinical illness) of medical treatment is approximately 86% (range 46%–100%) in dogs^{76,79,80,83,87,90–92,94,100} and 95% (range 90%–100%) in cats^{8,96,101} (see **Tables 6** and **7**). The prognosis for fertility after medical treatment is generally considered good, with a mean fertility rate of 70% (range 14%–100%) reported in dogs and of 60% in cats. The mean recurrence rate reported in dogs is 29% (range 0%–85%) and 0% to 14% in cats. Fertility rates after aglepristone treatment are higher in younger (<5 years) bitches and those that have no other uterine or ovarian pathology.^{93,94}

PREDICTIVE MARKERS

Of clinical and laboratory parameters investigated, leukopenia has been associated with both presence of peritonitis and increased postoperative hospitalization in surgically treated bitches with pyometra.⁵⁶ Concentrations of the acute-phase proteins, C-reactive protein, and serum amyloid A are increased in sepsis.^{78,102} Concentrations of C-reactive protein and PGF_{2 α} have been linked with length of postoperative hospitalization.^{25,78} Acute-phase proteins concentrations decrease gradually during postoperative recovery, and maintained or increased concentrations may indicate complications.^{64,65} Persistent proteinuria and urinary protein-creatinine indicate renal disease that requires special attention.⁶² Central venous oxygen saturation and base deficit and lactate levels were valuable for determining outcome in bitches with pyometra and sepsis.¹⁰³ Band neutrophil concentrations, lymphopenia and monocytosis, blood urea nitrogen greater than 30 mg/dL, and creatinine concentrations greater than 1.5 mg/dL have been associated with death.¹⁰⁴ Certain inflammatory variables, proteins, and measurement of cell-free DNA may be clinically useful for prognostication if cage-side tests become available.^{105–107} In queens, white blood cell counts, neutrophils, band neutrophils, monocytes, and the percentage band neutrophils were positively, and albumin concentrations negatively, associated with postoperative hospitalization.¹¹

DIFFERENTIATION OF PYOMETRA AND MUCOMETRA OR HYDROMETRA

Fluid in the uterine lumen is present in both pyometra and mucometra/hydrometra, and their clinical manifestations can be similar. In pyometra, however, life-threatening complications may develop because of the bacterial infection, and differentiation of these disorders is thus important to optimize treatments. Ultrasonographic examination of the uterus illustrating the fluid echogenicity and hemodynamic parameters may be helpful in some cases but is not diagnostic.⁵⁹ The health status is more depressed and lethargy and gastrointestinal disturbances more frequently observed in pyometra. More than 3 clinical signs of illness and a more pronounced inflammatory response also indicate pyometra as opposed to mucometra/hydrometra.^{25,26}

PREVENTION

To diagnose and treat CEH and pyometra early is favorable, and noninvasive diagnostic methods are warranted.^{108,109} Elective OHE has the advantage of being performed in a healthy animal and preventing pyometra and other uterine diseases. Because there are many negative side effects of spaying, all pros and cons of such intervention need to be thoroughly evaluated in each individual.^{7,110} If breeding on the first estrus after medical treatment is not possible, close monitoring is advisable to rule out abnormalities that may emerge during the luteal phase. Progesterone receptor blockers or prostaglandins may prevent the development of pyometra in high-risk patients.¹⁰⁸ Some investigators recommend postponing the subsequent estrus after medical treatment of pyometra, to promote uterine healing.⁸¹

STUMP PYOMETRA

A stump pyometra is when pyometra develops in residual uterine tissue in incompletely spayed bitches and queens, most often because of hormone-producing ovarian remnants.¹¹¹ The clinical presentation is similar, except for a history of previous spay. Ultrasonography usually shows areas of local fluid accumulation at the tissue stump, but it may be difficult to localize the ovarian remnant tissue unless follicles

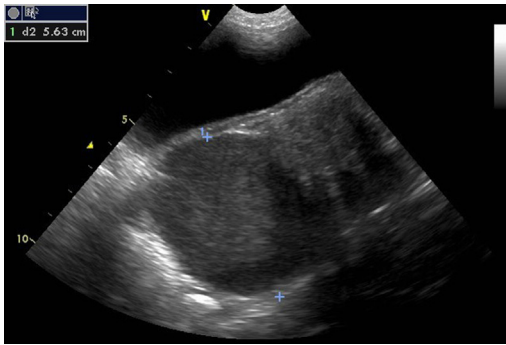


Fig. 12. Stump pyometra due to ovarian remnant.

are present (**Fig. 12**). Incomplete resection is the leading cause, but ectopic or revascularized ovarian tissue separated from the ovary during surgery have also been proposed.¹¹¹ Treatment includes surgical resection of remaining uterine and ovarian tissue, in combination with supportive treatments and antimicrobials, if indicated.

In addition to dogs and cats, pyometra has been described in many small animals such as rabbits (see **Fig. 3**), rodents, guinea pigs, hamsters, gerbils, ferrets, and chipmunks.^{112–115} In other pets, the causative microbes often differ from the bacteria isolated in dogs and cats with the disease. Ultrasonography and cytology are helpful to confirm a presumptive diagnosis based on clinical signs and physical examination, and the preferred treatment is OHE. Aglepristone, combined with antibiotics, has been used successfully for medical treatment in a golden hamster and a guinea pig.^{116,117}

ACKNOWLEDGMENTS

The author is very grateful for the following experts' contributions: Dr Fredrik Södersten, DVM, PhD, Swedish University of Agricultural Sciences, performed histopathology examinations and provided the images in **Fig. 1**. Dr George Mantziaras, DVM, PhD, VetRepro, Athens, Greece, provided the ultrasonography **Video 1** supplementary files and the stump pyometra ultrasonography image for **Fig. 12**. Associate Professor, Kerstin Hansson, DVM, PhD, Diplomate ECVDI, Swedish University of Agricultural Sciences (SLU) and the University Animal Hospital, SLU, provided the diagnostic imaging and text in **Fig. 3**. The University Animal Hospital, SLU, is acknowledged for the radiography images in **Fig. 5A** and **B**.

DISCLOSURE

The author has nothing to disclose.

SUPPLEMENTARY DATA

Supplementary data related to this article can be found online at <https://doi.org/10.1016/j.cvsm.2022.01.004>.

REFERENCES

1. Egenvall A, Hagman R, Bonnett BN, et al. Breed risk of pyometra in insured dogs in Sweden. *J Vet Intern Med* 2001;15:530–8.

2. Hagman R, Strom Holst B, Moller L, et al. Incidence of pyometra in Swedish insured cats. *Theriogenology* 2014;82:114–20.
3. Dow C. The cystic hyperplasia-pyometra complex in the bitch. *J Comp Pathol* 1959;69:237–50.
4. Hagman R, Greko C. Antimicrobial resistance in *Escherichia coli* isolated from bitches with pyometra and from urine samples from other dogs. *Vet Rec* 2005;157:193–6.
5. Sandholm M, Vasenius H, Kivisto AK. Pathogenesis of canine pyometra. *J Am Vet Med Assoc* 1975;167:1006–10.
6. Wadas B, Kuhn I, Lagerstedt AS, et al. Biochemical phenotypes of *Escherichia coli* in dogs: comparison of isolates isolated from bitches suffering from pyometra and urinary tract infection with isolates from faeces of healthy dogs. *Vet Microbiol* 1996;52:293–300.
7. Jitpean S, Hagman R, Strom Holst B, et al. Breed variations in the incidence of pyometra and mammary tumours in Swedish dogs. *Reprod Domest Anim* 2012; 47(Suppl 6):347–50.
8. Davidson AP, Feldman EC, Nelson RW. Treatment of pyometra in cats, using prostaglandin F2 alpha: 21 cases (1982–1990). *J Am Vet Med Assoc* 1992; 200:825–8.
9. Kenney KJ, Matthiesen DT, Brown NO, et al. Pyometra in cats: 183 cases (1979–1984). *J Am Vet Med Assoc* 1987;191:1130–2.
10. Arendt M, Ambrosen A, Fall T, Kierczak M, Tengvall K, Meadows JRS, Karlsson Å, Lagerstedt AS, Bergström T, Andersson G, Lindblad-Toh K, Hagman R. The ABCC4 gene is associated with pyometra in golden retriever dogs. *Sci Rep* 2021;11:16647.
11. Hagman R, Karlstam E, Persson S, et al. Plasma PGF 2 alpha metabolite levels in cats with uterine disease. *Theriogenology* 2009;72:1180–7.
12. Niskanen M, Thrusfield MV. Associations between age, parity, hormonal therapy and breed, and pyometra in Finnish dogs. *Vet Rec* 1998;143:493–8.
13. Von Berky AG, Townsend WL. The relationship between the prevalence of uterine lesions and the use of medroxyprogesterone acetate for canine population control. *Aust Vet J* 1993;70:249–50.
14. Hagman R, Lagerstedt AS, Hedhammar A, et al. A breed-matched case-control study of potential risk-factors for canine pyometra. *Theriogenology* 2011;75: 1251–7.
15. Cox JE. Progestagens in bitches: a review. *J Small Anim Pract* 1970;11:759–78.
16. England GC, Moxon R, Freeman SL. Delayed uterine fluid clearance and reduced uterine perfusion in bitches with endometrial hyperplasia and clinical management with postmating antibiotic. *Theriogenology* 2012;78:1611–7.
17. Hollinshead F, Krekeler N. Pyometra in the queen: to spay or not to spay? *J Feline Med Surg* 2016;18:21–33.
18. Wijewardana V, Sugiura K, Wijesekera DP, et al. Effect of ovarian hormones on maturation of dendritic cells from peripheral blood monocytes in dogs. *J Vet Med Sci* 2015;77:771–5.
19. Rowson LE, Lamming GE, Fry RM. Influence of ovarian hormones on uterine infection. *Nature* 1953;171:749–50.
20. Hawk HW, Turner GD, Sykes JF. The effect of ovarian hormones on the uterine defense mechanism during the early stages of induced infection. *Am J Vet Res* 1960;21:644–8.
21. Chaffaux S, Thibier M. Peripheral plasma concentrations of progesterone in the bitch with pyometra. *Ann Rech Vet* 1978;9:587–92.

22. Prapaiwan N, Manee-In S, Olanratmanee E, et al. Expression of oxytocin, progesterone, and estrogen receptors in the reproductive tract of bitches with pyometra. *Theriogenology* 2017;89:131–9.
23. Strom Holst B, Larsson B, Rodriguez-Martinez H, et al. Prediction of the oocyte recovery rate in the bitch. *J Vet Med A Physiol Pathol Clin Med* 2001;48:587–92.
24. De Bosschere H, Ducatelle R, Vermeirsch H, et al. Cystic endometrial hyperplasia-pyometra complex in the bitch: should the two entities be disconnected? *Theriogenology* 2001;55:1509–19.
25. Fransson BA, Karlstam E, Bergstrom A, et al. C-reactive protein in the differentiation of pyometra from cystic endometrial hyperplasia/mucometra in dogs. *J Am Anim Hosp Assoc* 2004;40:391–9.
26. Hagman R, Kindahl H, Fransson BA, et al. Differentiation between pyometra and cystic endometrial hyperplasia/mucometra in bitches by prostaglandin F2alpha metabolite analysis. *Theriogenology* 2006;66:198–206.
27. Santana CH, Santos DO, Trindade LM, Moreira LGA, Paixao TA, Santos R. Association of pseudoplacental endometrial hyperplasia and pyometra in dogs. *J Comp Path* 2020;180:79–85.
28. Schlafer DH, Gillford AT. Cystic endometrial hyperplasia, pseudo-placental endometrial hyperplasia, and other cystic conditions of the canine and feline uterus. *Theriogenology* 2008;70:349–58.
29. Borresen B, Naess B. Microbial immunological and toxicological aspects of canine pyometra. *Acta Vet Scand* 1977;18:569–71.
30. Coggan JA, Melville PA, de Oliveira CM, et al. Microbiological and histopathological aspects of canine pyometra. *Braz J Microbiol* 2008;39:477–83.
31. Fransson B, Lagerstedt AS, Hellmen E, et al. Bacteriological findings, blood chemistry profile and plasma endotoxin levels in bitches with pyometra or other uterine diseases. *Zentralbl Veterinarmed A* 1997;44:417–26.
32. Grindlay M, Renton JP, Ramsay DH. O-groups of *Escherichia coli* associated with canine pyometra. *Res Vet Sci* 1973;14:75–7.
33. Hernandez JL, Besso JG, Rault DN, et al. Emphysematous pyometra in a dog. *Vet Radiol Ultrasound* 2003;44:196–8.
34. Nomura K, Yoshida K, Funahashi H, et al. The possibilities of uterine infection of *Escherichia coli* inoculated into the vagina and development of endometritis in bitches. *Jpn J Reprod* 1988;34:199–203.
35. Agostinho JM, de Souza A, Schocken-Iturrino RP, et al. *Escherichia coli* strains isolated from the uteri horn, mouth, and rectum of bitches suffering from pyometra: virulence factors, antimicrobial susceptibilities, and clonal relationships among strains. *Int J Microbiol* 2014;2014:979584.
36. Hagman R, Kuhn I. *Escherichia coli* strains isolated from the uterus and urinary bladder of bitches suffering from pyometra: comparison by restriction enzyme digestion and pulsed-field gel electrophoresis. *Vet Microbiol* 2002;84:143–53.
37. Watts JR, Wright PJ, Whithear KC. Uterine, cervical and vaginal microflora of the normal bitch throughout the reproductive cycle. *J Small Anim Pract* 1996;37:54–60.
38. Szczubial M, Kankofer M, Wawrykowski, et al. Activity of the glycosidases β -galactosidase, α -L-fucosidase, β -N-acetyl-hexosaaminidase, and sialidase in uterine tissues from female dogs in diestrus with and without pyometra. *Theriogenology* 2021;177:133–9.
39. Mateus L, Henriques S, Merino C, et al. Virulence genotypes of *Escherichia coli* canine isolates from pyometra, cystitis and fecal origin. *Vet Microbiol* 2013;166:590–4.

40. Siqueira AK, Ribeiro MG, Leite Dda S, et al. Virulence factors in *Escherichia coli* strains isolated from urinary tract infection and pyometra cases and from feces of healthy dogs. *Res Vet Sci* 2009;86:206–10.
41. Chen YM, Wright PJ, Lee CS, et al. Uropathogenic virulence factors in isolates of *Escherichia coli* from clinical cases of canine pyometra and feces of healthy bitches. *Vet Microbiol* 2003;94:57–69.
42. Fiamengo TE, Runcan EE, Premanandan C, Blawut B, Coutinho da Silva MA. Evaluation of Biofilm Production by *Escherichia coli* Isolated From Clinical Cases of Canine Pyometra. *Top Companion Anim Med* 2020;39:100429.
43. Lopes CE, De Carli S, Imperico Riboldi C, de Lorenzo C, Panziera W, Driemeier D, Maboni Siqueira F. Pet pyometra: correlating bacteria pathogenicity to endometrial histological changes. *Pathogens* 2021;10:833.
44. Pugliese M, La Maestra R, Passantino A, Cristarella S, De Majo M, Biondi V, Quartuccio M. Electrocardiographic findings in bitches affected by closed cervix pyometra. *Vet Sci* 2020;7:183.
45. Van Miert ASJ, Frens J. The reaction of different animal species to bacterial pyrogens. *Zentralbl Veterinarmed A* 1968;15:532–43.
46. McAnulty JF. Septic shock in the dog: a review. *J Am Anim Hosp Assoc* 1983;19:827–36.
47. Okano S, Tagawa M, Takase K. Relationship of the blood endotoxin concentration and prognosis in dogs with pyometra. *J Vet Med Sci* 1998;60:1265–7.
48. Hagman R, Kindahl H, Lagerstedt AS. Pyometra in bitches induces elevated plasma endotoxin and prostaglandin F₂α metabolite levels. *Acta Vet Scand* 2006;47:55–67.
49. Karlsson I, Wernersson S, Ambrosen A, et al. Increased concentrations of C-reactive protein but not high-mobility group box 1 in dogs with naturally occurring sepsis. *Vet Immunol Immunopathol* 2013;156:64–72.
50. Marretta SM, Matthiesen DT, Nichols R. Pyometra and its complications. *Probl Vet Med* 1989;1:50–62.
51. Wheaton LG, Johnson AL, Parker AJ, et al. Results and complications of surgical treatment of pyometra: a review of 80 cases. *J Am Anim Hosp Assoc* 1987;25:563–8.
52. Singer M. The new sepsis consensus definitions (Sepsis-3): the good, the not-so-bad, and the actually-quite-pretty. *Intensive Care Med* 2016;42:2027–9.
53. Brady CA, Otto CM, Van Winkle TJ, et al. Severe sepsis in cats: 29 cases (1986–1998). *J Am Vet Med Assoc* 2000;217:531–5.
54. Børresen B. Pyometra in the dog. II.-A pathophysiological investigation. II. Anamnestic, clinical and reproductive aspects. *Nord Vet Med* 1979;31:251–7.
55. Jitpean S, Ambrosen A, Emanuelson U, et al. Closed cervix is associated with more severe illness in dogs with pyometra. *BMC Vet Res* 2017;13:11.
56. Jitpean S, Strom-Holst B, Emanuelson U, et al. Outcome of pyometra in female dogs and predictors of peritonitis and prolonged postoperative hospitalization in surgically treated cases. *BMC Vet Res* 2014;10:6.
57. Bjurström L. Aerobic bacteria occurring in the vagina of bitches with reproductive disorders. *Acta Vet Scand* 1993;34:29–34.
58. Mattei C, Fabbi M, Hansson K. Radiographic and ultrasonographic findings in a dog with emphysematous pyometra. *Acta Vet Scand* 2018;60:67.
59. Bigliardi E, Parmigiani E, Cavirani S, et al. Ultrasonography and cystic hyperplasia-pyometra complex in the bitch. *Reprod Domest Anim* 2004;39:136–40.

60. Vandeplassche M, Coryn M, De Schepper J. Pyometra in the bitch: cytological, bacterial, histological and endocrinological characteristics. *Vlaams Diergeneeskd Tijdschr* 1991;60:207–11.
61. Hardy RM, Osborne CA. Canine pyometra: pathophysiology, diagnosis and treatment of uterine and extra-genital lesions. *J Am Anim Hosp Assoc* 1974;10:245–67.
62. Maddens B, Heiene R, Smets P, et al. Evaluation of kidney injury in dogs with pyometra based on proteinuria, renal histomorphology, and urinary biomarkers. *J Vet Intern Med* 2011;25:1075–83.
63. Asheim A. Renal function in dogs with pyometra. 8. Uterine infection and the pathogenesis of the renal dysfunction. *Acta Pathol Microbiol Scand* 1964;60:99–107.
64. Dabrowski R, Kostro K, Lisiecka U, et al. Usefulness of C-reactive protein, serum amyloid A component, and haptoglobin determinations in bitches with pyometra for monitoring early post-ovariohysterectomy complications. *Theriogenology* 2009;72:471–6.
65. Vilhena H, Figueiredo M, Cerón JJ, Pastor J, Miranda S, Craveiro H, Pires MA, Tecles F, Rubio CP, Dabrowski R, Duarte S, Silvestre-Ferreira AC, Tvarijonaviciute A. Acute phase proteins and antioxidant responses in queens with pyometra. *Theriogenology* 2018;115:30–7.
66. Dorsey TI, Rozanski EA, Sharp CR, et al. Evaluation of thromboelastography in bitches with pyometra. *J Vet Diagn Invest* 2018;30(1):165–168.
67. Becher-Deichsel A, Aurich JE, Schrammel N, et al. A surgical glove port technique for laparoscopic-assisted ovariohysterectomy for pyometra in the bitch. *Theriogenology* 2016;86:619–25.
68. Fieni F, Topie E, Gogny A. Medical treatment for pyometra in dogs. *Reprod Domest Anim* 2014;49(Suppl 2):28–32.
69. Fantoni D, Shih AC. Perioperative fluid therapy. *Vet Clin North Am Small Anim Pract* 2017;47:423–34.
70. Kirby R. An introduction to SIRS and the rule of 20. In: Kirby R, Linklater A, editors. *Monitoring and intervention for the critically ill small animal*. Ames (IA): Wiley Blackwell; 2017. p. 1–8.
71. DeClue A. Sepsis and the systemic inflammatory response syndrome. In: Ettinger SJ, Feldman EC, Cote E, editors. *Textbook of veterinary internal medicine: diseases of the dogs and cat*. 8th edition. St Louis (MO): Elsevier; 2016. p. 554–60.
72. Devey JJ. Surgical considerations in the emergent small animal patient. *Vet Clin North Am Small Anim Pract* 2013;43:899–914.
73. Liao PY, Chang SC, Chen KS, et al. Decreased postoperative C-reactive protein production in dogs with pyometra through the use of low-dose ketamine. *J Vet Emerg Crit Care (San Antonio)* 2014;24:286–90.
74. Tobias KM, Wheaton LG. Surgical management of pyometra in dogs and cats. *Semin Vet Med Surg (Small Anim)* 1995;10:30–4.
75. Bartoskova A, Vitasek R, Leva L, et al. Hysterectomy leads to fast improvement of haematological and immunological parameters in bitches with pyometra. *J Small Anim Pract* 2007;48:564–8.
76. Feldman EC, Nelson RW. Cystic endometrial hyperplasia/pyometra complex. In: Feldman EC, Nelson RW, editors. *Endocrinology and reproduction*. 3rd edition. St Louis (MO): Saunders; 2004. p. 852–67.
77. Fantoni DT, Auler Junior JO, Futema F, et al. Intravenous administration of hypertonic sodium chloride solution with dextran or isotonic sodium chloride solution for treatment of septic shock secondary to pyometra in dogs. *J Am Vet Med Assoc* 1999;215:1283–7.

78. Fransson BA, Lagerstedt AS, Bergstrom A, et al. C-reactive protein, tumor necrosis factor alpha, and interleukin-6 in dogs with pyometra and SIRS. *J Vet Emerg Crit Care* 2007;17:373–81.
79. Fieni F. Clinical evaluation of the use of aglepristone, with or without cloprostenol, to treat cystic endometrial hyperplasia-pyometra complex in bitches. *Theriogenology* 2006;66:1550–6.
80. England GC, Freeman SL, Russo M. Treatment of spontaneous pyometra in 22 bitches with a combination of cabergoline and cloprostenol. *Vet Rec* 2007;160:293–6.
81. Verstegen J, Dhaliwal G, Verstegen-Onclin K. Mucometra, cystic endometrial hyperplasia, and pyometra in the bitch: advances in treatment and assessment of future reproductive success. *Theriogenology* 2008;70:364–74.
82. Lopate C. Pyometra, cystic endometrial hyperplasia (hydrometra, mucometra, hematometra). In: Greco DS, Davidson AP, editors. *Blackwell's five-minute veterinary consult clinical companion, small animal endocrinology and reproduction*. Hoboken (NJ): Wiley-Blackwell; 2017. p. 53–62.
83. Contri A, Gloria A, Carluccio A, et al. Effectiveness of a modified administration protocol for the medical treatment of canine pyometra. *Vet Res Commun* 2015;39:1–5.
84. Davidson A. Female and male infertility and subfertility. In: Nelson RW, Couto CG, editors. *Small animal internal medicine*. 5th edition. St Louis (MO): Elsevier; 2014. p. 951–65.
85. Greer M. *Canine reproduction and neonatology - a practical guide for veterinarians, veterinary staff and breeders*. Jackson (WY): Teton Newmedia; 2015.
86. BSAVA small animal formulary. 8th edition. Gloucester (United Kingdom): British Small Animal Veterinary Association; 2014.
87. Jena B, Rao KS, Reddy KCS, et al. Comparative efficacy of various therapeutic protocols in the treatment of pyometra in bitches. *Vet Med* 2013;58:271–6.
88. Arnold S, Hubler M, Casal M, et al. Use of low dose prostaglandin for the treatment of canine pyometra. *J Small Anim Pract* 1988;29:303–8.
89. Sridevi P, Balasubramanian S, Devanathan T, et al. Low dose prostaglandin F2 alpha therapy in treatment of canine pyometra. *Indian Vet J* 2000;77:889–90.
90. Corrada Y, Arias D, Rodriguez R, et al. Combination dopamine agonist and prostaglandin agonist treatment of cystic endometrial hyperplasia-pyometra complex in the bitch. *Theriogenology* 2006;66:1557–9.
91. Gurbulak K, Pancarci M, Ekici H, et al. Use of aglepristone and aglepristone + intrauterine antibiotic for the treatment of pyometra in bitches. *Acta Vet Hung* 2005;53:249–55.
92. Trasch K, Wehrend A, Bostedt H. Follow-up examinations of bitches after conservative treatment of pyometra with the antigestagen aglepristone. *J Vet Med A Physiol Pathol Clin Med* 2003;50:375–9.
93. Jurka P, Max A, Hawrynska K, et al. Age-related pregnancy results and further examination of bitches after aglepristone treatment of pyometra. *Reprod Domest Anim* 2010;45:525–9.
94. Ros L, Holst BS, Hagman R. A retrospective study of bitches with pyometra, medically treated with aglepristone. *Theriogenology* 2014;82:1281–6.
95. Gogny A, Fieni F. Aglepristone: a review on its clinical use in animals. *Theriogenology* 2016;85:555–66.
96. Nak D, Nak Y, Tuna B. Follow-up examinations after medical treatment of pyometra in cats with the progesterone-antagonist aglepristone. *J Feline Med Surg* 2009;11:499–502.
97. Lagerstedt A-S, Obel N, Stavenborn M. Uterine drainage in the bitch for treatment of pyometra refractory to prostaglandin F2 α . *J Small Anim Pract* 1987;28:215–22.

98. Gabor G, Siver L, Szenci O. Intravaginal prostaglandin F2 alpha for the treatment of metritis and pyometra in the bitch. *Acta Vet Hung* 1999;47:103–8.
99. De Cramer KG. Surgical uterine drainage and lavage as treatment for canine pyometra. *J S Afr Vet Assoc* 2010;81:172–7.
100. Gobello C, Castex G, Klima L, et al. A study of two protocols combining aglepristone and cloprostenol to treat open cervix pyometra in the bitch. *Theriogenology* 2003;60:901–8.
101. Garcia Mitacek MC, Stornelli MC, Tittarelli CM, et al. Cloprostenol treatment of feline open-cervix pyometra. *J Feline Med Surg* 2014;16:177–9.
102. Jitpean S, Pettersson A, Hoglund OV, et al. Increased concentrations of Serum amyloid A in dogs with sepsis caused by pyometra. *BMC Vet Res* 2014;10:273.
103. Conti-Patara A, de Araujo Caldeira J, de Mattos-Junior E, et al. Changes in tissue perfusion parameters in dogs with severe sepsis/septic shock in response to goal-directed hemodynamic optimization at admission to ICU and the relation to outcome. *J Vet Emerg Crit Care (San Antonio)* 2012;22:409–18.
104. Kuplulu S, Vural MR, Demirel A, et al. The comparative evaluation of serum biochemical, haematological, bacteriological and clinical findings of dead and recovered bitches with pyometra in the postoperative process. *Acta Veterinaria-Beograd* 2009;59:193–204.
105. Hagman R. Diagnostic and prognostic markers for uterine diseases in dogs. *Reprod Domest Anim* 2014;49(Suppl 2):16–20.
106. Kuleš J, Horvatić A, Guillemin N, Ferreira RF, Mischke R, Mrljak V, Chadwick CC, Eckersall PD. The plasma proteome and the acute phase protein response in canine pyometra. *J Proteomics* 2020;223:103817.
107. Ahn S, Bae H, Kim J, et al. Comparison of clinical and inflammatory parameters in dogs with pyometra before and after ovariohysterectomy. *Can J Vet Res* 2021;85:271–8.
108. Mir F, Fontaine E, Albaric O, et al. Findings in uterine biopsies obtained by laparotomy from bitches with unexplained infertility or pregnancy loss: an observational study. *Theriogenology* 2013;79:312–22.
109. Christensen BW, Schlafer DH, Agnew DW, et al. Diagnostic value of transcervical endometrial biopsies in domestic dogs compared with full-thickness uterine sections. *Reprod Domest Anim* 2012;47(Suppl 6):342–6.
110. Artl S, Wehrend A, Reichler IM. Kastration der Hundin - neue und alte Erkenntnisse zu Vor- und nachteilen. *Tierärztliche Praxis Kleintiere* 2017;45:253–63.
111. Ball RL, Birchard SJ, May LR, et al. Ovarian remnant syndrome in dogs and cats: 21 cases (2000-2007). *J Am Vet Med Assoc* 2010;236:548–53.
112. Kondert L, Mayer J. Reproductive medicine in guinea pigs, chinchillas and degus. *Vet Clin North Am Exot Anim Pract* 2017;20:609–28.
113. Martorell J. Reproductive disorders in pet rodents. *Vet Clin North Am Exot Anim Pract* 2017;20:589–608.
114. Mancinelli E, Lord B. Urogenital system and reproductive disease. Gloucester (United Kingdom): BSAVA; 2016.
115. Heap RB. Prostaglandins in pyometrial fluid from the cow, bitch and ferret. *Br J Pharmacol* 1975;55:515–8.
116. Engelhardt AB. Behandlung des Endometritis/Pyometrakomplexes eines Meerschweinchens - ein Fallbericht. *Prakt Tierarzt* 2006;87:14–6.
117. Pisu MC, Andolfatto A, Veronesi MC. Pyometra in a six-month-old nulliparous golden hamster (*Mesocricetus auratus*) treated with aglepristone. *Vet Q* 2012;32:179–81.
118. Nelson RW, Feldman EC. Pyometra. *Vet Clin North Am Small Anim Pract* 1986;16:561–76.