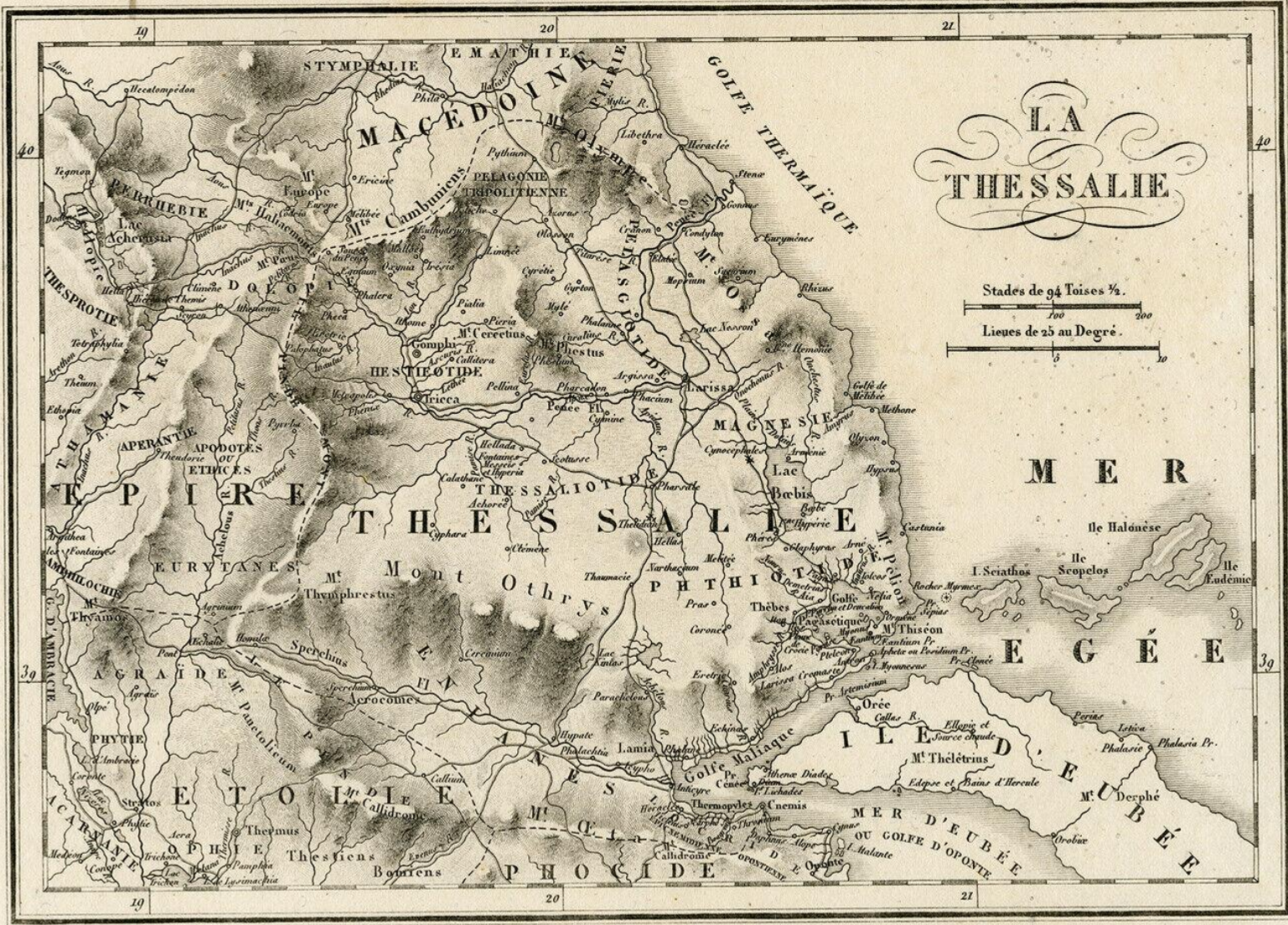




Theatrum Orbis Terrarum Abrahami Ortelii Antverp. Geographi Regii. Antwerpen, Plantin Press, 1601



40
39
19

20
20
20

21
21
21

40
39

Ο Πηνειός στη μυθολογία ήταν γιος του Ωκεανού και της Τηθύος. Με τη Νύμφη Κρέουσα, γέννησε τον Υψέα και τη Στίλβη. Κόρες του Πηνειού ήταν και οι Νύμφες, Τρίκκη και Λάρισα, οι οποίες έδωσαν τα ονόματά τους στις ομώνυμες θεσσαλικές πόλεις

Pinios in mythology was the son of Oceanus and Tethys. With the nymph Creusa, he gave birth to Hysseus and Stilvi. Pinios' daughters were the Nymphs, Trikki and Larissa, who gave their names to the Thessalian cities of the same name.



Pinios River

Ali Efenti Bridge

Legend

— River Network

— Pinios River

● Ali Efenti

DEM Tressaly

10 m - 287 m

288 m - 596 m

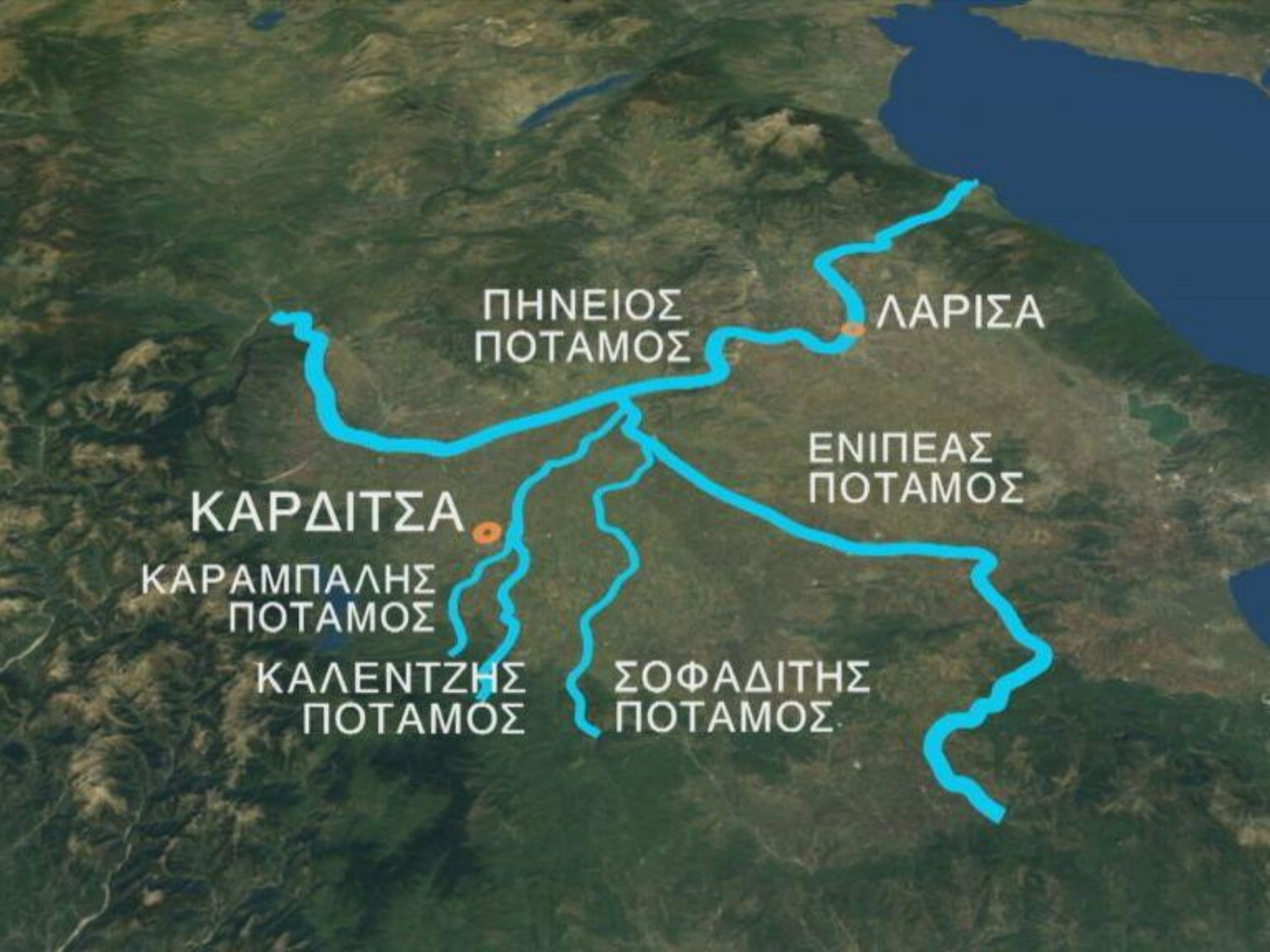
597 m - 968 m

969 m - 1,458 m

1,459 m - 2,726 m

0 5 10 20 30 40
Kilometers





ΠΗΝΕΙΟΣ
ΠΟΤΑΜΟΣ

ΛΑΡΙΣΑ

ΕΝΙΠΕΑΣ
ΠΟΤΑΜΟΣ

ΚΑΡΔΙΤΣΑ

ΚΑΡΑΜΠΑΛΗΣ
ΠΟΤΑΜΟΣ

ΚΑΛΕΝΤΖΗΣ
ΠΟΤΑΜΟΣ

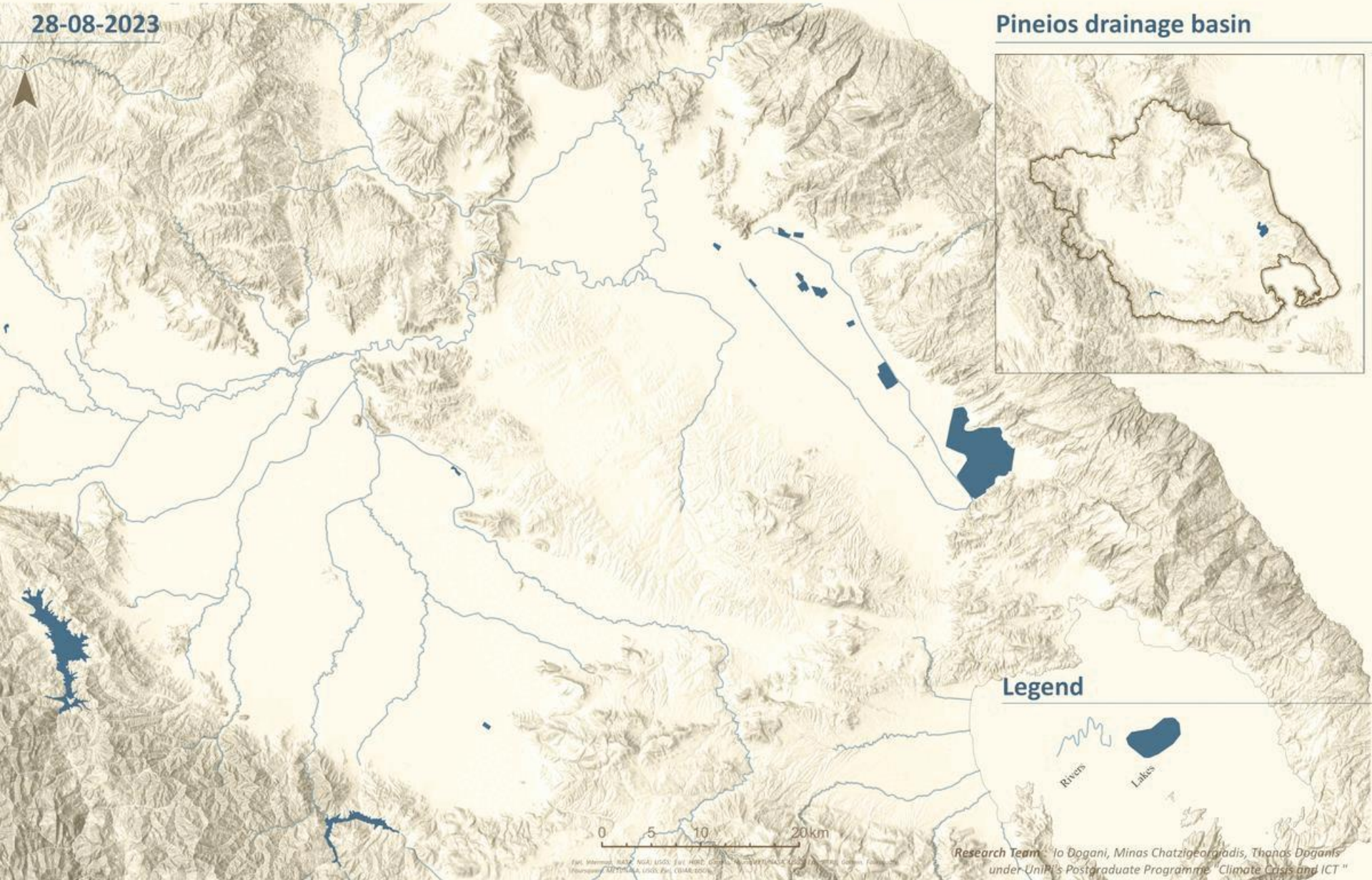
ΣΟΦΑΔΙΤΗΣ
ΠΟΤΑΜΟΣ

Assessing the Impacts of 2023 flood in Thessaly, Greece

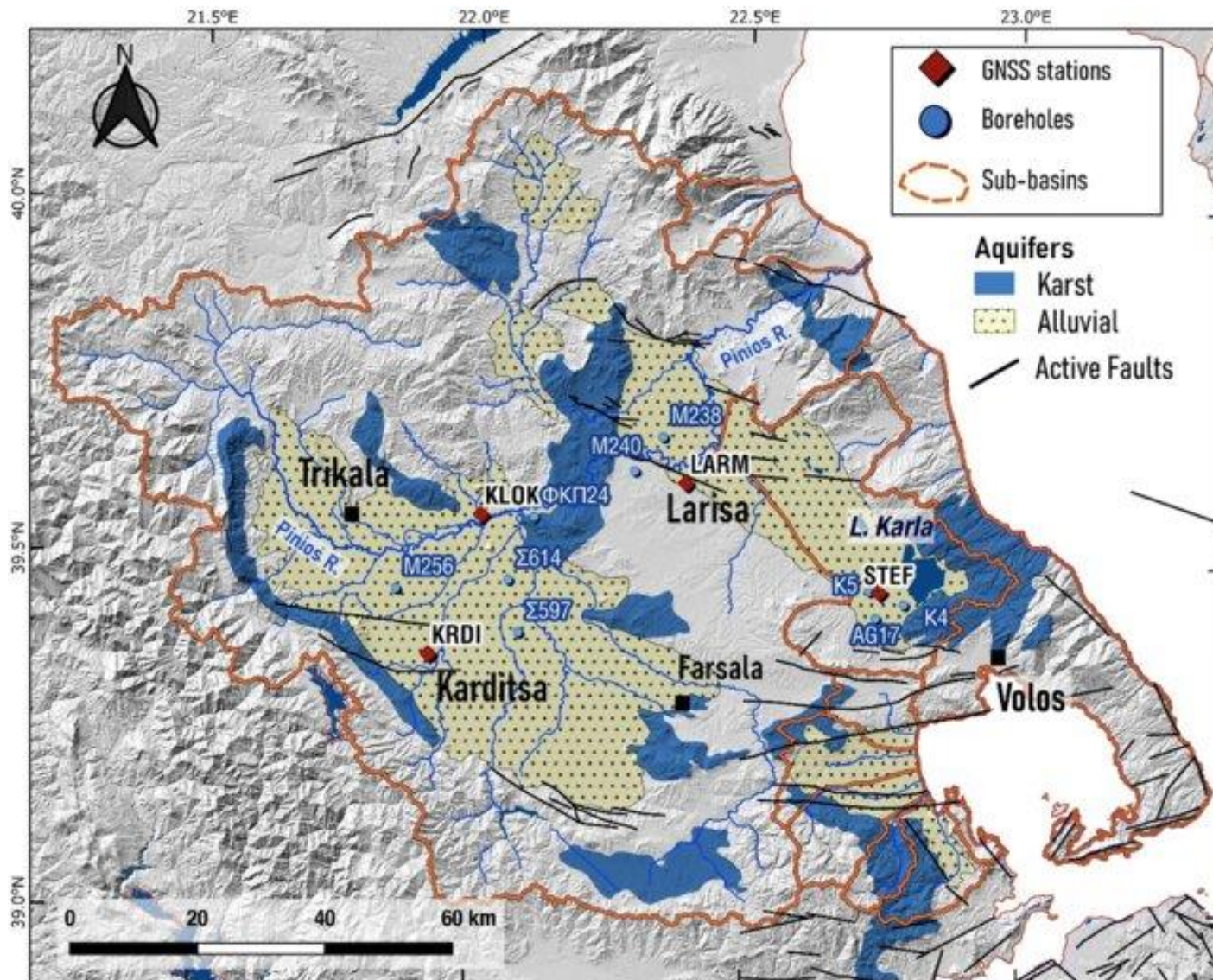
A Multi-temporal Analysis on the impact of the flood utilizing Sentinel-1 data.

28-08-2023

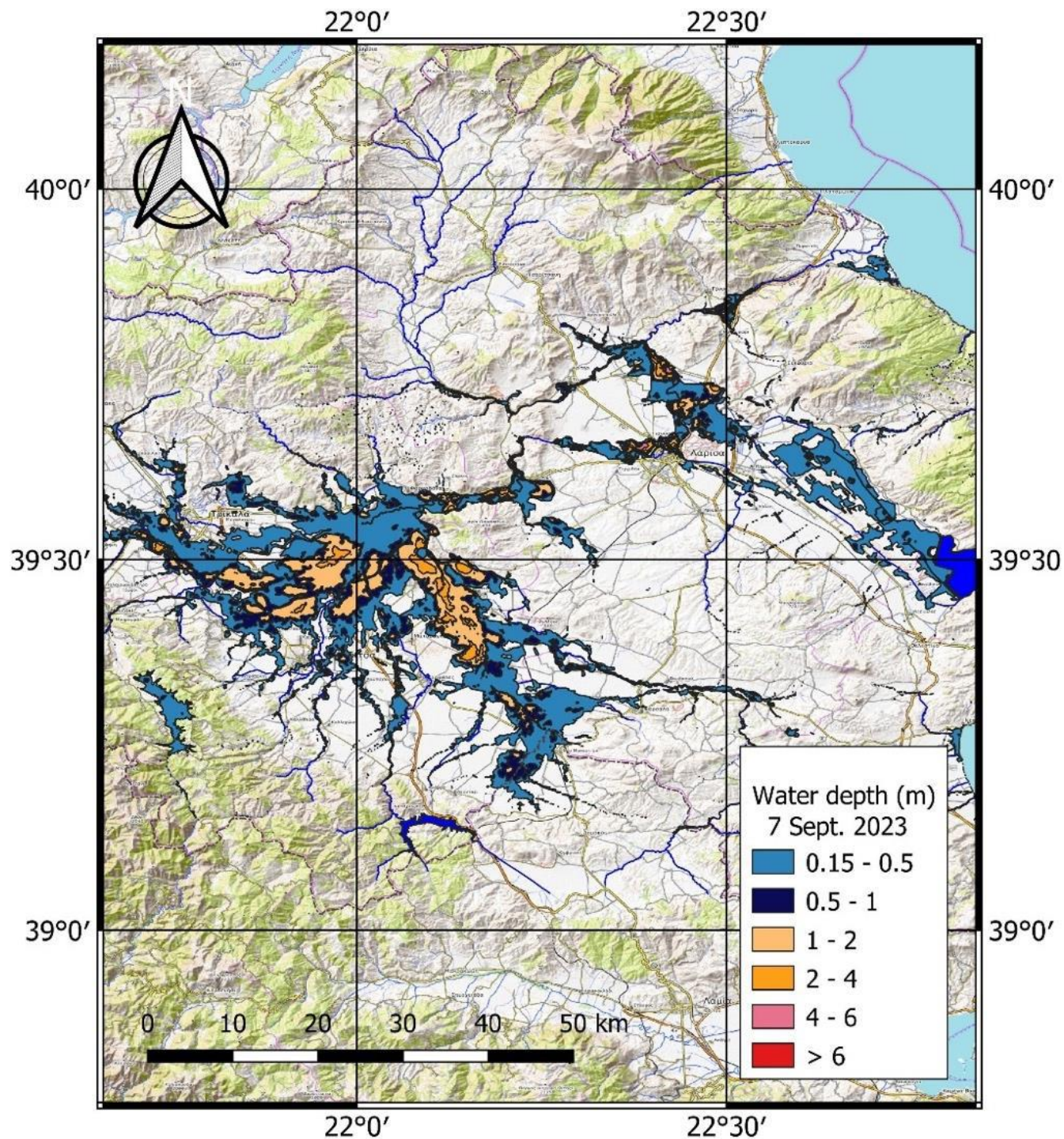
Pineios drainage basin

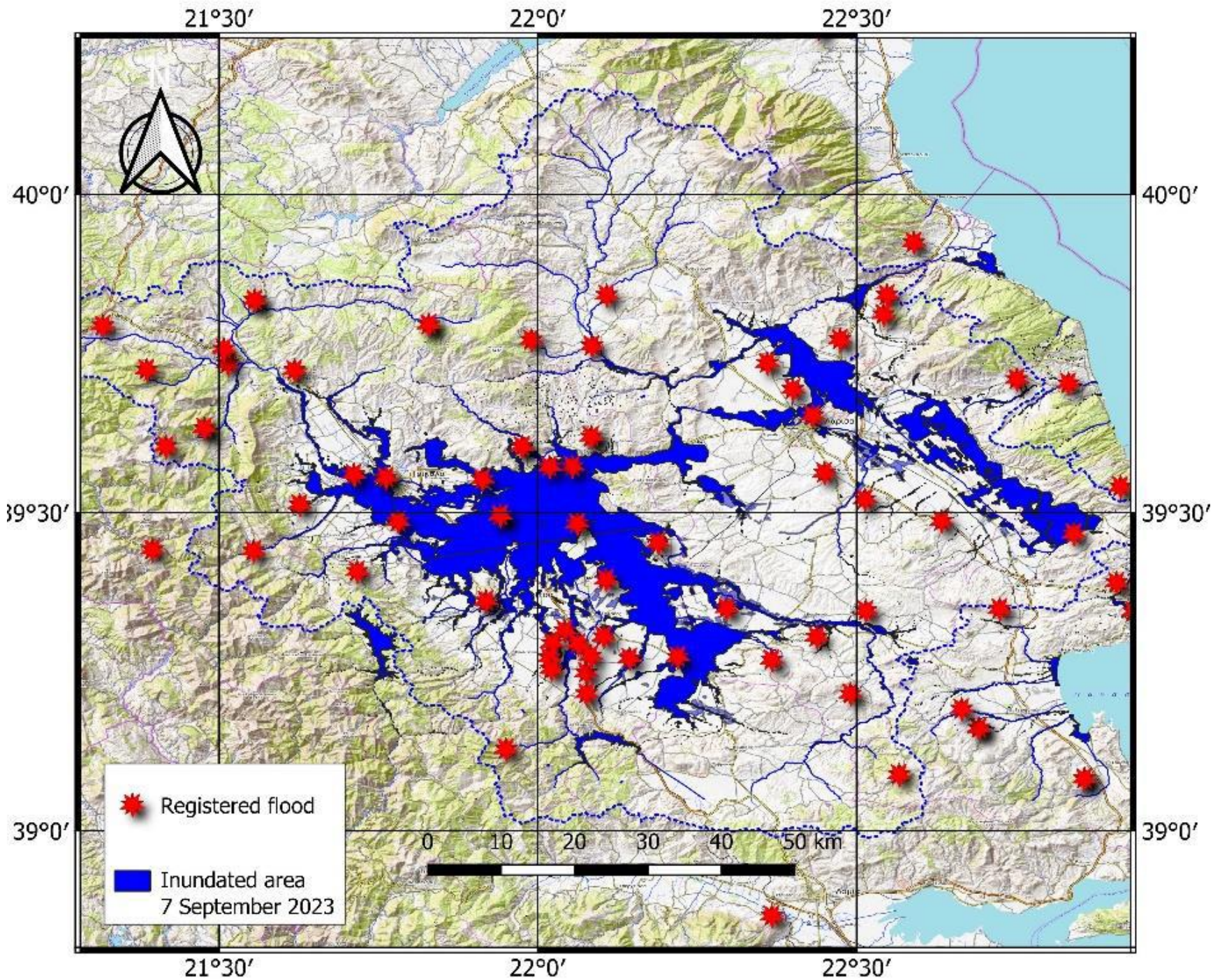


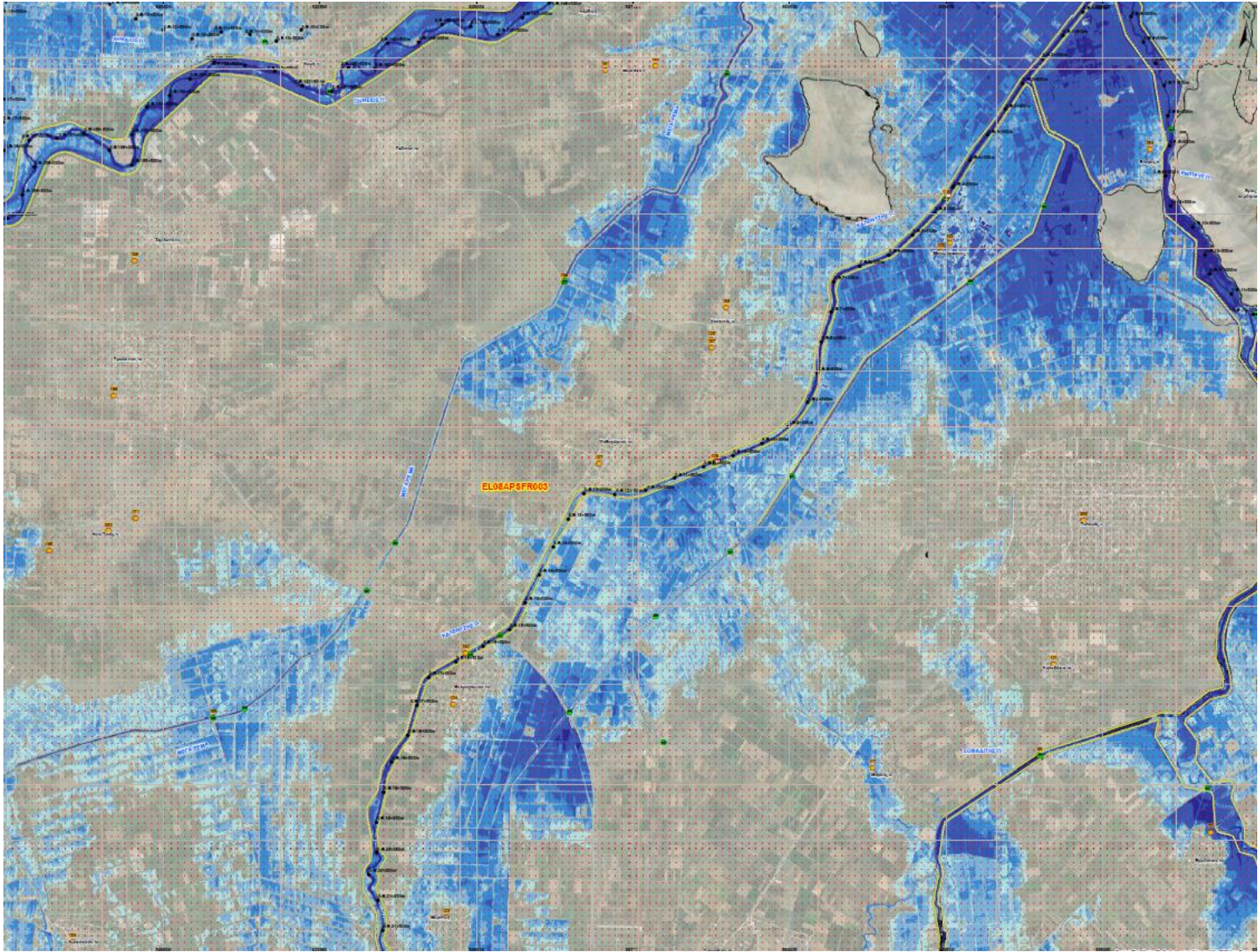


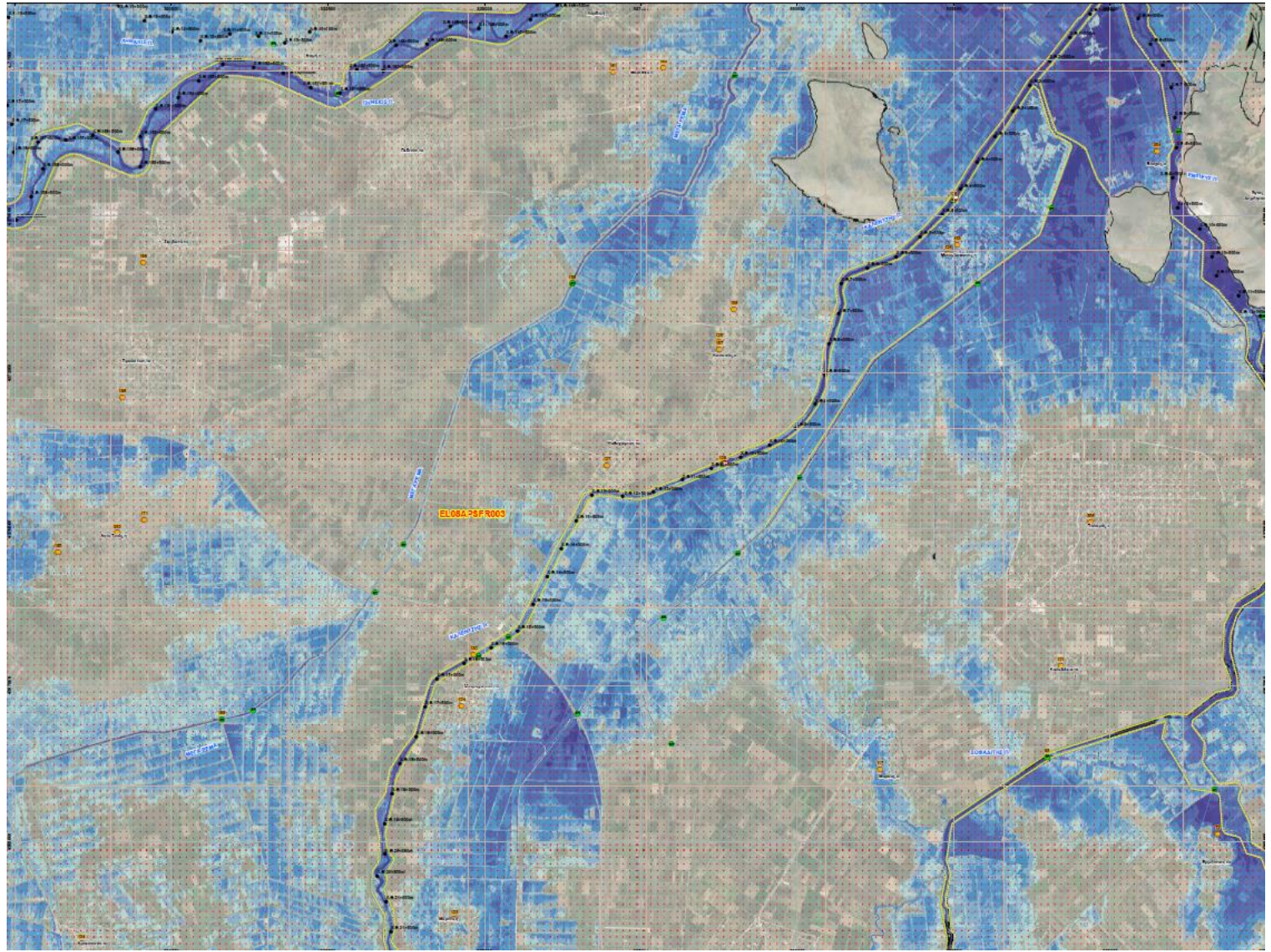


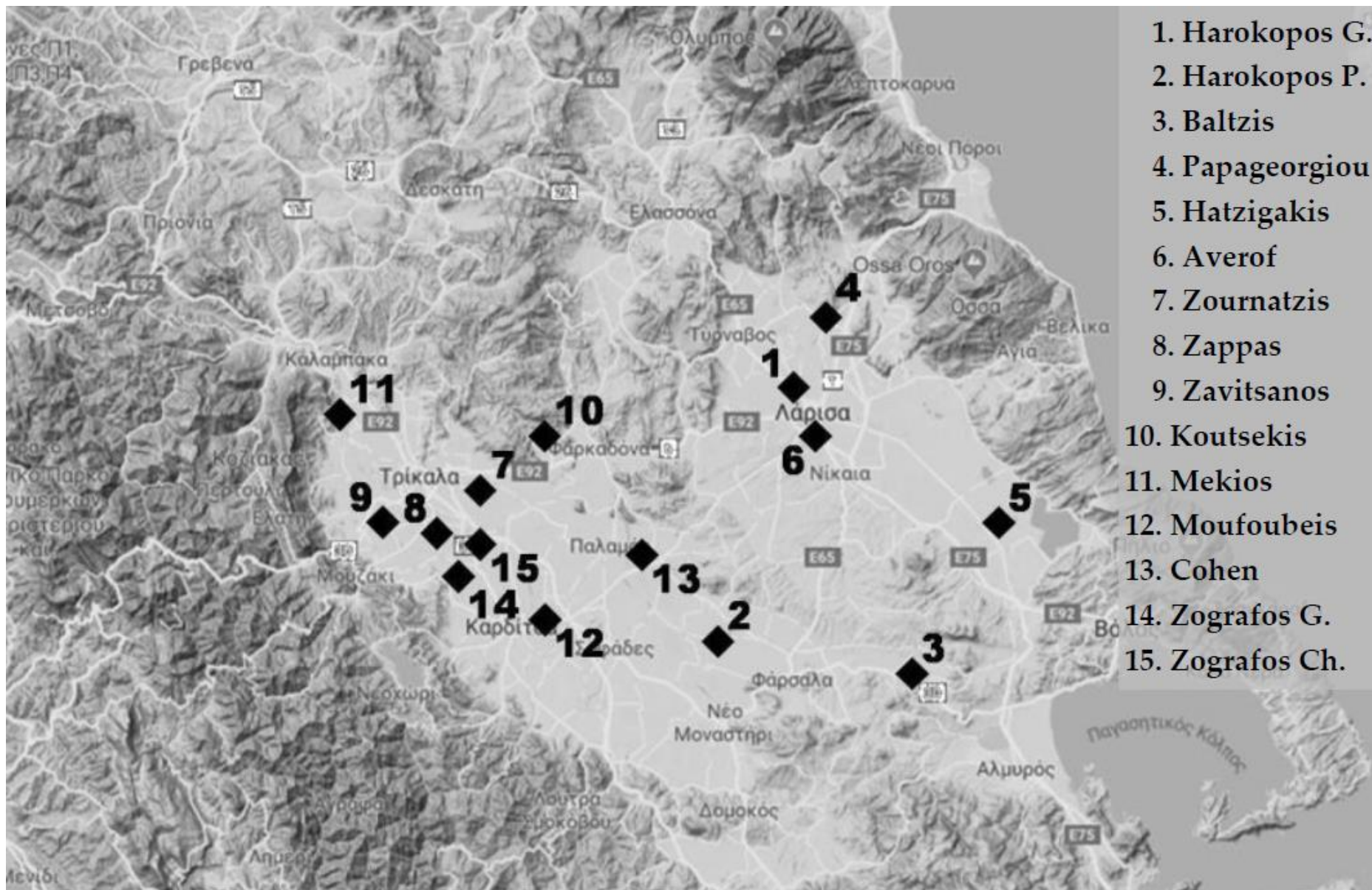
Relief map of Thessaly showing locations of groundwater boreholes near the GNSS stations. Background colors indicate the nature of groundwater storage (karstic vs alluvial). Black lines are active faults













Zografou G.



Zavitsanos



Papageorgiou



Moufoubeis



Harokopos G.



Harokopos P.













© 2024 Google

Google Earth